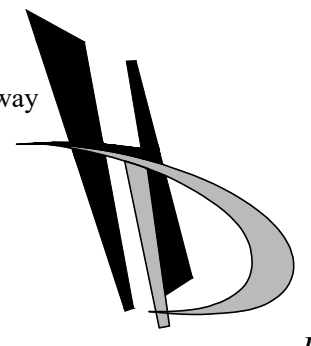


SERENOA LAKES PHASE ~~1~~ & 2 (A.K.A. SERENOA VILLAGE 3 - PHASE ~~1~~, 2 & 3)

Prepared For:
VK AVALON GROVES, LLC
14025 RIVEREDGE DRIVE SUITE 175
TAMPA, FL 33637
Phone: (813) 615-1244

5904-A Hampton Oaks Parkway
Tampa, Florida 33610
Office: 813-253-5311
Fax: 813-464-7629



**HEIDT
DESIGN**
Civil Engineering • Planning & GIS
Transportation Engineering
Ecological Services • Landscape Architecture

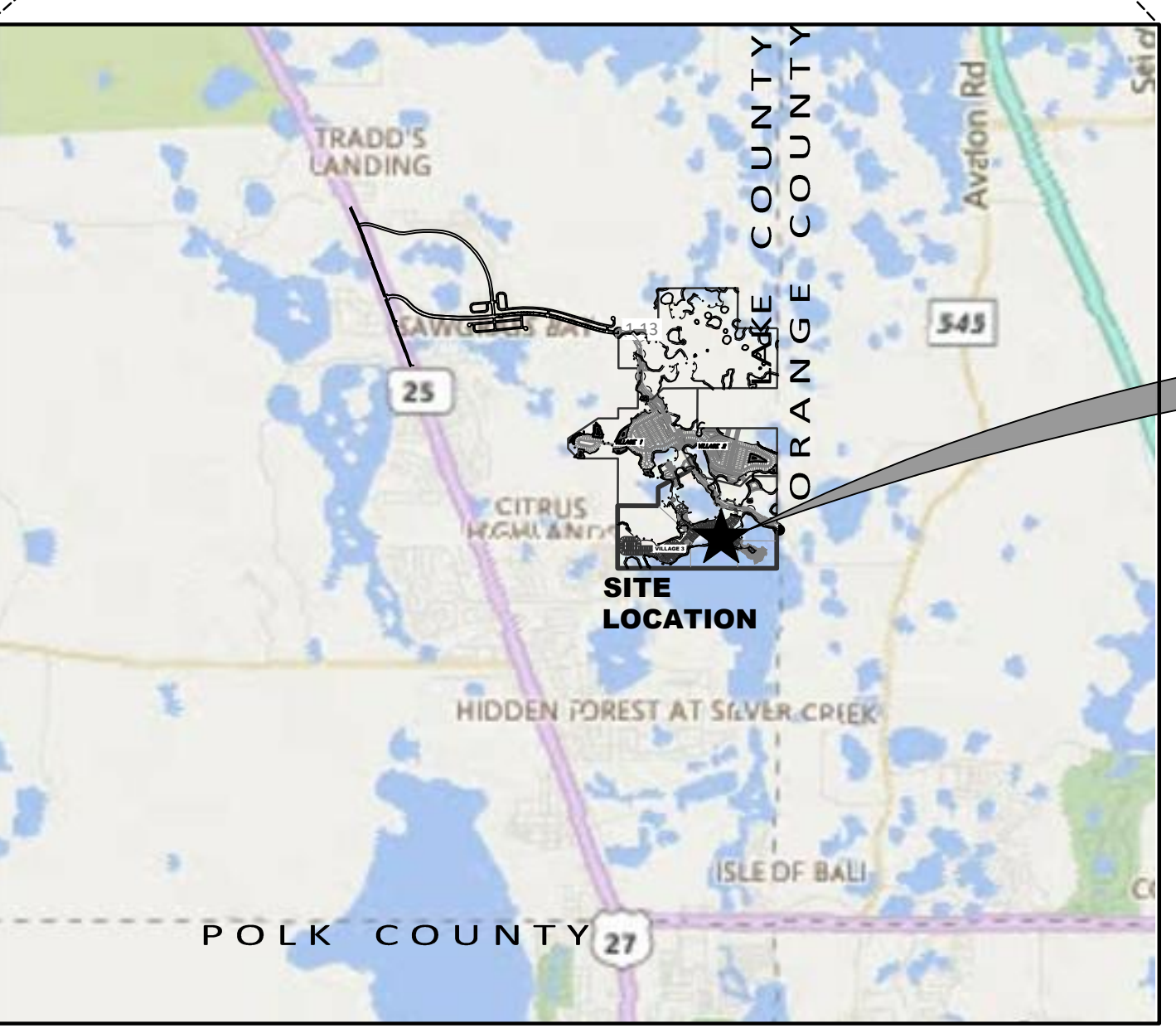
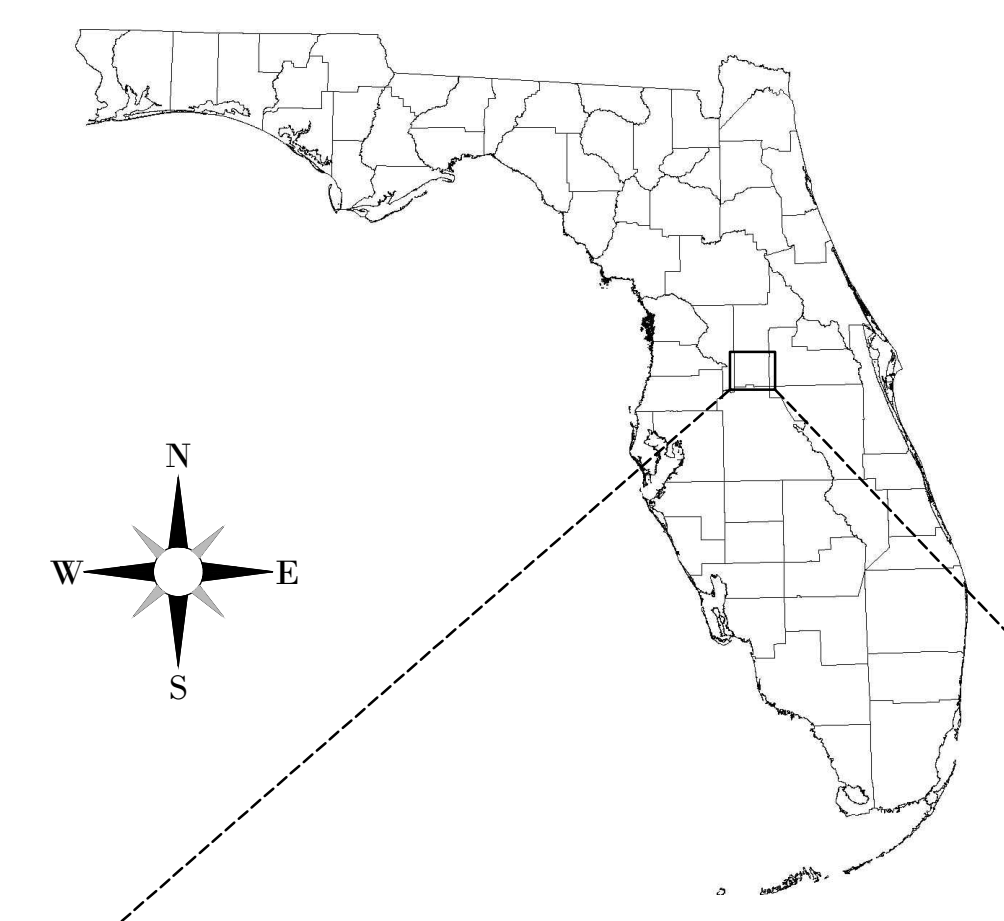
Engineering Business Certificate of Authorization No. 28782
Landscape Architecture Certificate of Authorization No. LC26000405

~~RECORD~~ ~~CONSTRUCTION~~ PLAN SECTION 24, TOWNSHIP 24 SOUTH, RANGE 26 EAST LAKE COUNTY, FLORIDA

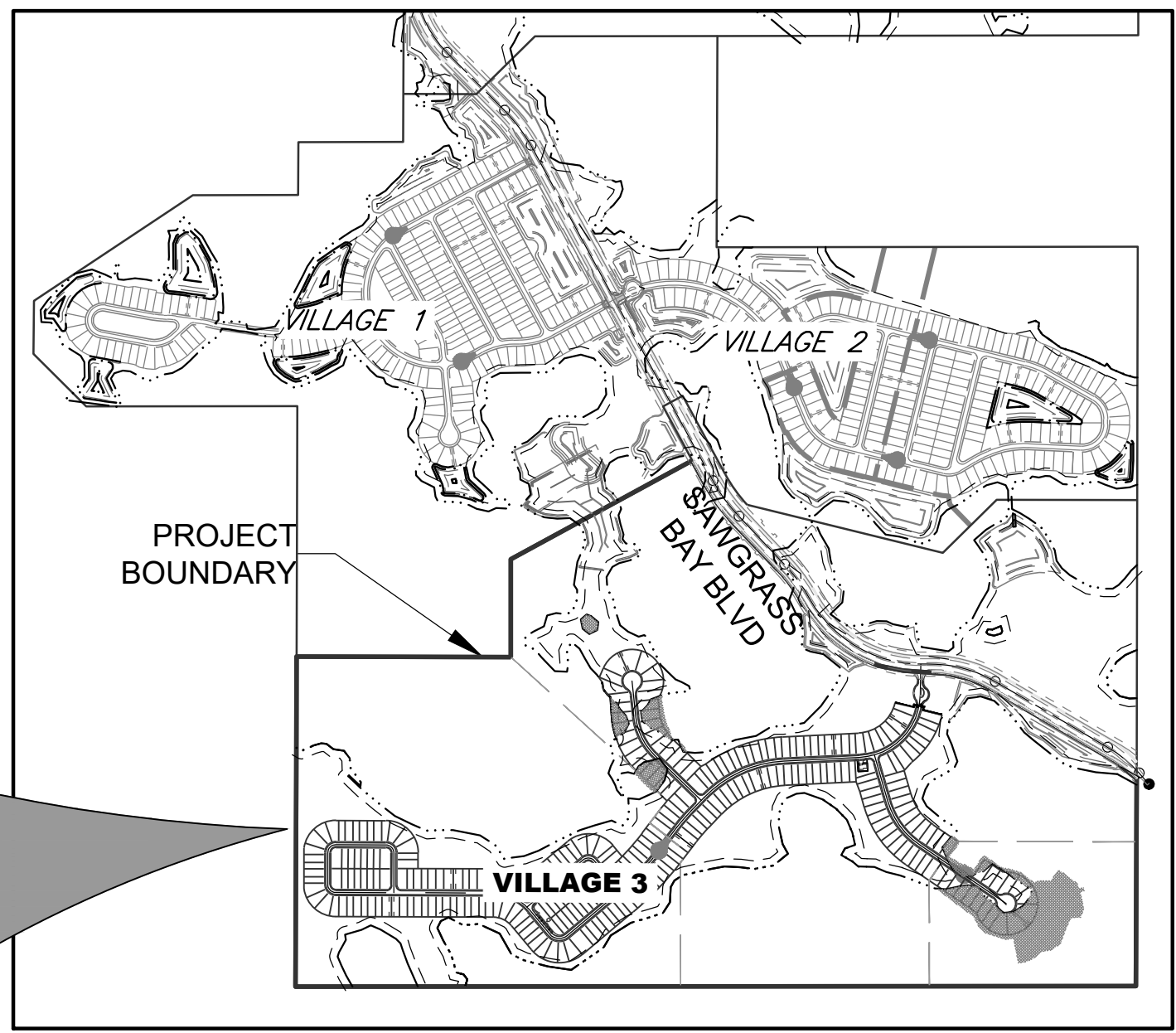
CALL 48 HOURS BEFORE YOU DIG



1-800-432-4770



LOCATION MAP
(NOT TO SCALE)



SITE MAP
(NOT TO SCALE)

RECORD DATA
PROVIDED BY
BLUE OXLAND
SERVICES

SERENOA
VILLAGE 3
PHASE 2
"RECORD DRAWINGS"

FACILITIES SHOWN HEREON HAVE BEEN, TO THE BEST OF MY KNOWLEDGE, CONSTRUCTED IN SUBSTANTIAL ACCORDANCE WITH APPROVED PLANS. SPECIFICATIONS AND MODIFICATIONS FOR THIS PROJECT, VERIFICATION IS BASED ON PERIODIC CONSTRUCTION OBSERVATION AND SURVEY NOTATIONS SHOWN ON PLANS. SURVEYED DIMENSIONS AND ELEVATIONS SHOWN AS RECORD INFORMATION HAVE BEEN FIELD VERIFIED.

LAST DATE OF FIELD SURVEY: 07/26/2021

RECORD DRAWING LEGEND	
42.00	PROPOSED/DESIGN ELEVATION OR DIMENSION LINED THROUGH, "RECORD" ELEVATION OR DIMENSION WRITTEN IN.
42.07	
X 5k.B	INDICATES RECORD ELEVATION
✓	INDICATES "RECORD" ELEVATION, DIMENSION, SLOPE, et cetera.
100	INDICATES "RECORD" ITEM NUMBER
8" W/M	INDICATES "RECORD" ITEM DESCRIPTION

NOTE: PER LDF CH. 6.06.01F, SOIL REMOVAL OFFSITE SHALL NOT EXCEED 200% OF THE MINIMUM STORMWATER RETENTION/DETENTION VOLUME REQUIRED.

NOTE: SEE SHEET C-104 FOR LEGAL DESCRIPTIONS.

Sheet List Table	
Sheet Number	Sheet Title
100 - GENERAL	
C-100	COVER SHEET
C-101 - C-103	GENERAL NOTES
C-104	AERIALSITE PLAN
C-105	EXISTING SITE CONDITIONS
C-105A	MASTER-SITE
C-106 - C-107	LOT GEOMETRY PLAN
200 - ROADWAY DETAILS	
C-200	TYPICAL ROADWAY SECTIONS
300 - DRAINAGE	
C-300	MASTER GRADING & DRAINAGE PLAN
C-301 - C-312	GRADING & DRAINAGE PLAN
C-313	STORM STRUCTURE DATA
C-314	CONTROL STRUCTURE DETAIL
C-315 - C-316	GRADING & DRAINAGE SECTIONS
C-317 - C-320	DRAINAGE DETAILS
400 - UTILITIES	
C-400	MASTER WATER & SEWER PLAN
C-401 - C-408	WATER & SEWER PLAN
500 - PLAN & PROFILE	
C-501 - C-512	ROADWAY PLAN & PROFILE
600 - UTILITY DETAILS	
C-600 - C-601	PUMP STATION DETAILS
C-602 - C-604	WATER & SEWER DETAILS
700 - PAVEMENT MARKING & SIDEWALKS	
C-700	SIGNING, PAVEMENT MARKING & SIDEWALK PLANS
C-701 - C-706	SIGNING, PAVEMENT MARKING & SIDEWALK PLANS
C-707 - C-708	SIGNING, PAVEMENT MARKING & SIDEWALK DETAILS AND NOTES
900 - ENGINEERING ADDENDA	
C-900	CONSTRUCTION SURFACE WATER MANAGEMENT PLAN
C-901	CONSTRUCTION SURFACE WATER MANAGEMENT PLAN NOTES
C-902	PRE-DEVELOPMENT DRAINAGE AREA MAP
C-903	OVERALL POST-DEVELOPMENT DRAINAGE AREA MAP
C-904 - C-905	DRAINAGE SUB-BASIN AREA MAP
C-906	FLOODPLAIN ENCROACHMENT & COMPENSATION
C-907 - C-909	UPLAND BUFFER AND C.E. SIGN LOCATIONS

THE FOLLOWING SUPPLEMENTAL PLAN SHEETS WERE NOT PREPARED UNDER THE RESPONSIBLE CHARGE OF THE ENGINEER OF RECORD:

LANDSCAPE PLANS PREPARED BY:
HEIDT DESIGN, LLC

SERENOA
VILLAGE 3 - PHASE 1, 2 & 3

VK AVALON GROVES, LLC

DATE	DESCRIPTION
8 01/05/2021	C-906
7 08/19/2020	C-600
6 07/30/2020	C-313, C-501-503, C-505-506, C-509-510
5 07/24/2020	C-508, C-600
4 07/02/2020	C-404, C-408
3 05/27/2020	C-106, C-200, C-300, C-302-304, C-307, C-308, C-400, C-401-408, C-501-509, C-511, C-603, C-700-703, C-705
2 03/20/2020	C-103, C-106, C-107, C-200, C-300, C-311, C-400, C-408, C-501, C-512, C-600, C-604, C-701, C-705, C-707
1 11/13/2019	C-300, C-302, C-303, C-308, C-310, C-313, C-401, C-404, C-407, C-501, C-502, C-504, C-509, C-511
11/08/2019	REVIEW SUBMITTAL
DATE	DESCRIPTION

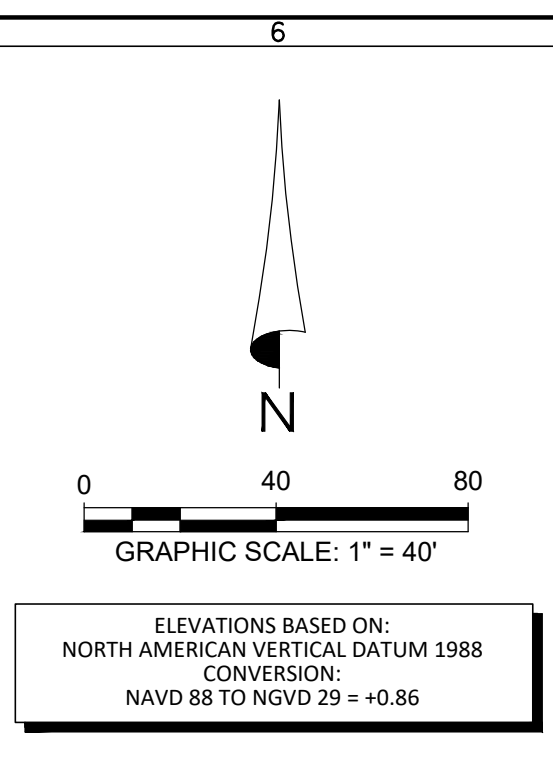
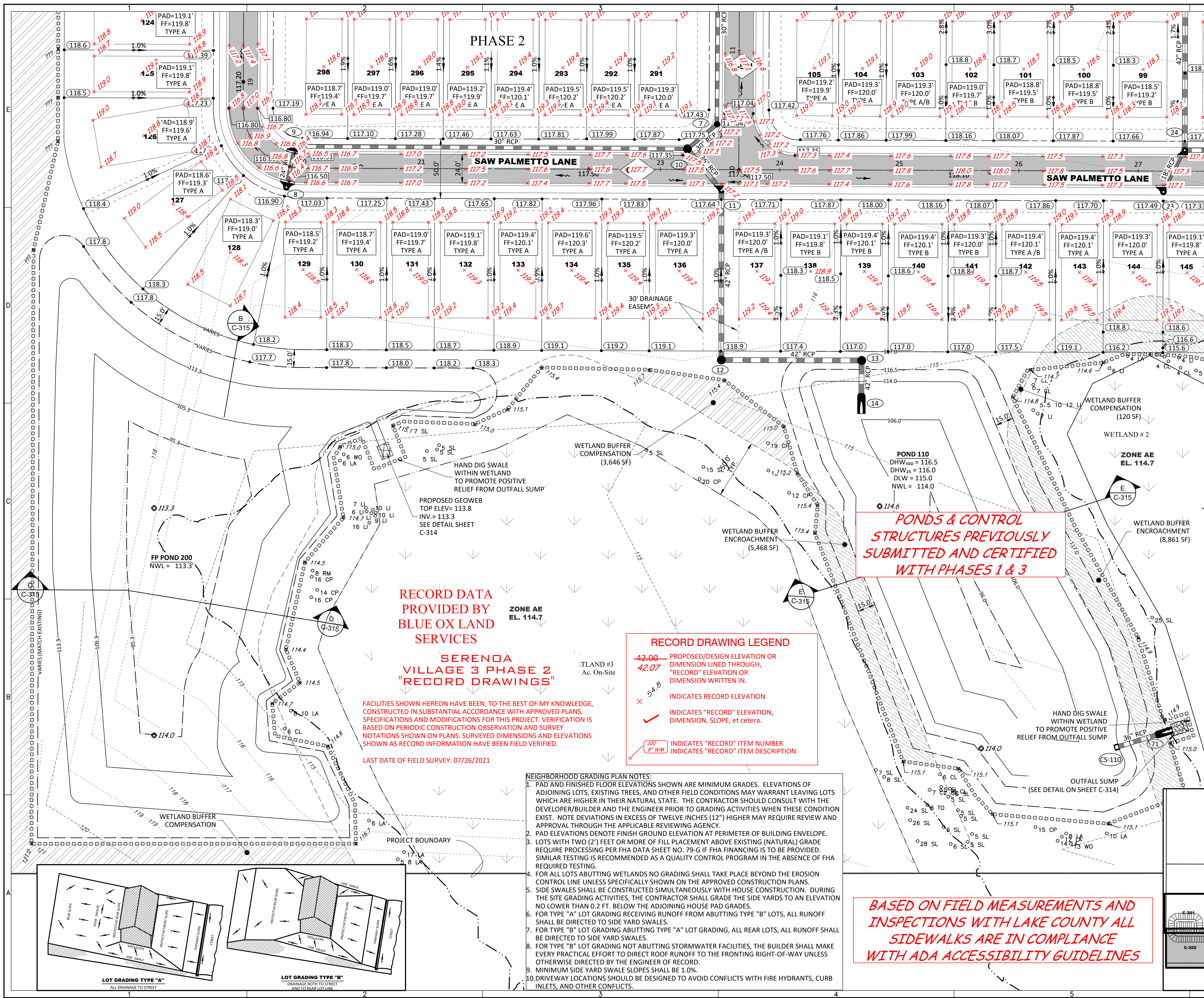
DATE	DESCRIPTION
12/10/2021	ADDED PH 2 RECORD INFO CS01 THRU CS04 & CS12
12 11/15/2021	C-304, C-310, C-311
11 06/16/2021	C-105A, C-300, C-303
10 05/24/2021	C-313, C-501, C-502
9 3/08/2021	C-106, C-301, C-305, C-402, C-503
DATE	DESCRIPTION

© COPYRIGHT 2022, HEIDT DESIGN, LLC. ALL RIGHTS RESERVED. NO DOCUMENTATION (INCLUDING BUT NOT LIMITED TO DRAWINGS OR EXHIBITS) MAY BE COPIED, REPRODUCED, OR DISTRIBUTED UNLESS SPECIFIC WRITTEN PERMISSION HAS BEEN OBTAINED FROM HEIDT DESIGN, LLC. IN ADVANCE. CONSENT IS HEREBY GRANTED SPECIFICALLY TO GOVERNMENTAL AGENCIES TO REPRODUCE THIS DOCUMENTATION IN COMPLIANCE WITH F.S. CHAPTER 119.



ELEVATIONS BASED ON: NORTH AMERICAN VERTICAL DATUM 1988 CONVERSION: NAVD 88 TO NGVD 29 = +0.86	
ADDRESS CONTROL NUMBER	
WATER COMMITMENT	
SEWER COMMITMENT	
SWFVMD	
WATER DEP	
SEWER DEP	
FOLIO	
PERMIT / FILE NUMBERS	

STATE OF FLORIDA PROFESSIONAL ENGINEER	FILE:	COVER-REC
Timothy M. Plate, State of Florida, Professional Engineer, License No. 41153 <small>This date has been digitally signed and sealed by Timothy M. Plate, P.E., on the date indicated here.</small>	PROJECT NO:	KLP-AG-1089
	GRADING & DRAINAGE	
	DESIGN BY:	FRANCIS
	DRAWN BY:	JLOAIZA
	UTILITIES	
	DESIGN BY:	CBKALE
	DRAWN BY:	JLOAIZA
	COVER SHEET	
	C-100	
	TIMOTHY M. PLATE, P.E.	
	DATE:	
	LICENSE NO.	41153



LEGEND

- SIRWMD WETLAND LINE
- SIRWMD WETLAND CONS. AREA SETBACK / LANDWARD EXTENT OF UPLAND BUFFER (50')
- FEMA LINE
- BOUNDARY LIMITS
- RIGHT-OF-WAY LINE
- PHASE LINE
- WETLAND IMPACT

DRAINAGE LEGEND

- EXISTING: 10 (STRUCTURE NO.), 15.00 (SPOT ELEVATION GROUND), 60.2 (TOP OF WALL), 55.9 (BOTTOM OF WALL), 15.00 (ROADWAY PROFILE ELEVATION), 15.00 (CONTOUR), 15.00 (FINISH FLOOR ELEVATION)
- PROPOSED: 10 (STORM DRAINAGE STRUCTURE & PIPE), CS-F (CONTROL STRUCTURE NO.), 15.00 (SPOT ELEVATION GROUND), 60.2 (TOP OF WALL), 55.9 (BOTTOM OF WALL), 15.00 (ROADWAY PROFILE ELEVATION), 15.00 (CONTOUR), 15.00 (FINISH FLOOR ELEVATION)
- FF=15.00 (FINISH FLOOR ELEVATION)
- Direction of surface flow (arrow)
- UNDERDRAIN WITH CLEANOUT
- STAKED EROSION CONTROL (SIRWMD PROJECT LIMITS AND THE LIMITS OF CLEARING AND FILLING)
- FLOATING TURBIDITY BARRIER
- BOTTOM OF POND/TOP OF BANK OF POND
- 6" WALL/FENCE (BY OTHERS)
- PLAN & PROFILE SHEET NUMBER (C-505)
- SECTION ID LABEL (A-A, C-317)
- SECTION SHEET NUMBER (P03)
- SOIL BORING (P03)
- WETLAND SETBACK ENCROACHMENT (hatched)
- WETLAND SETBACK COMPENSATION (dotted)

RECORD DRAWING LEGEND

- 42.00 (PROPOSED/DESIGN ELEVATION OR DIMENSION LINED THROUGH, "RECORD" ELEVATION OR DIMENSION WRITTEN IN)
- 54.8 (INDICATES RECORD ELEVATION)
- ✓ (INDICATES "RECORD" ELEVATION, DIMENSION, SLOPE, et cetera)
- 100 (INDICATES "RECORD" ITEM NUMBER)
- 8" (INDICATES "RECORD" ITEM DESCRIPTION)

RECORD DATA PROVIDED BY BLUE OX LAND SERVICES

SERENOA VILLAGE 3 PHASE 2 "RECORD DRAWINGS"

WETLAND #3 EL. 114.7

WETLAND #2 EL. 114.7

WETLAND #1 EL. 114.7

WETLAND BUFFER COMPENSATION (3,646 SF)

WETLAND BUFFER ENCROACHMENT (5,468 SF)

WETLAND BUFFER ENCROACHMENT (8,861 SF)

WETLAND BUFFER COMPENSATION (120 SF)

WETLAND #2

WETLAND #1

WETLAND #3

WETLAND #4

WETLAND #5

WETLAND #6

WETLAND #7

WETLAND #8

WETLAND #9

WETLAND #10

WETLAND #11

WETLAND #12

WETLAND #13

WETLAND #14

WETLAND #15

WETLAND #16

WETLAND #17

WETLAND #18

WETLAND #19

WETLAND #20

WETLAND #21

WETLAND #22

WETLAND #23

WETLAND #24

WETLAND #25

WETLAND #26

WETLAND #27

WETLAND #28

WETLAND #29

WETLAND #30

WETLAND #31

WETLAND #32

WETLAND #33

WETLAND #34

WETLAND #35

WETLAND #36

WETLAND #37

WETLAND #38

WETLAND #39

WETLAND #40

WETLAND #41

WETLAND #42

WETLAND #43

WETLAND #44

WETLAND #45

WETLAND #46

WETLAND #47

WETLAND #48

WETLAND #49

WETLAND #50

WETLAND #51

WETLAND #52

WETLAND #53

WETLAND #54

WETLAND #55

WETLAND #56

WETLAND #57

WETLAND #58

WETLAND #59

WETLAND #60

WETLAND #61

WETLAND #62

WETLAND #63

WETLAND #64

WETLAND #65

WETLAND #66

WETLAND #67

WETLAND #68

WETLAND #69

WETLAND #70

WETLAND #71

WETLAND #72

WETLAND #73

WETLAND #74

WETLAND #75

WETLAND #76

WETLAND #77

WETLAND #78

WETLAND #79

WETLAND #80

WETLAND #81

WETLAND #82

WETLAND #83

WETLAND #84

WETLAND #85

WETLAND #86

WETLAND #87

WETLAND #88

WETLAND #89

WETLAND #90

WETLAND #91

WETLAND #92

WETLAND #93

WETLAND #94

WETLAND #95

WETLAND #96

WETLAND #97

WETLAND #98

WETLAND #99

WETLAND #100

WETLAND #101

WETLAND #102

WETLAND #103

WETLAND #104

WETLAND #105

WETLAND #106

WETLAND #107

WETLAND #108

WETLAND #109

WETLAND #110

WETLAND #111

WETLAND #112

WETLAND #113

WETLAND #114

WETLAND #115

WETLAND #116

WETLAND #117

WETLAND #118

WETLAND #119

WETLAND #120

WETLAND #121

WETLAND #122

WETLAND #123

WETLAND #124

WETLAND #125

WETLAND #126

WETLAND #127

WETLAND #128

WETLAND #129

WETLAND #130

WETLAND #131

WETLAND #132

WETLAND #133

WETLAND #134

WETLAND #135

WETLAND #136

WETLAND #137

WETLAND #138

WETLAND #139

WETLAND #140

WETLAND #141

WETLAND #142

WETLAND #143

WETLAND #144

WETLAND #145

WETLAND #146

WETLAND #147

WETLAND #148

WETLAND #149

WETLAND #150

WETLAND #151

WETLAND #152

WETLAND #153

WETLAND #154

WETLAND #155

WETLAND #156

WETLAND #157

WETLAND #158

WETLAND #159

WETLAND #160

WETLAND #161

WETLAND #162

WETLAND #163

WETLAND #164

WETLAND #165

WETLAND #166

WETLAND #167

WETLAND #168

WETLAND #169

WETLAND #170

WETLAND #171

WETLAND #172

WETLAND #173

WETLAND #174

WETLAND #175

WETLAND #176

WETLAND #177

WETLAND #178

WETLAND #179

WETLAND #180

WETLAND #181

WETLAND #182

WETLAND #183

WETLAND #184

WETLAND #185

WETLAND #186

WETLAND #187

WETLAND #188

WETLAND #189

WETLAND #190

WETLAND #191

WETLAND #192

WETLAND #193

WETLAND #194

WETLAND #195

WETLAND #196

WETLAND #197

WETLAND #198

WETLAND #199

WETLAND #200

WETLAND #201

WETLAND #202

WETLAND #203

WETLAND #204

WETLAND #205

WETLAND #206

WETLAND #207

WETLAND #208

WETLAND #209

WETLAND #210

WETLAND #211

WETLAND #212

WETLAND #213

WETLAND #214

WETLAND #215

WETLAND #216

WETLAND #217

WETLAND #218

WETLAND #219

WETLAND #220

WETLAND #221

WETLAND #222

WETLAND #223

WETLAND #224

WETLAND #225

WETLAND #226

WETLAND #227

WETLAND #228

WETLAND #229

WETLAND #230

WETLAND #231

WETLAND #232

WETLAND #233

WETLAND #234

WETLAND #235

WETLAND #236

WETLAND #237

WETLAND #238

WETLAND #239

WETLAND #240

WETLAND #241

WETLAND #242

WETLAND #243

WETLAND #244

WETLAND #245

WETLAND #246

WETLAND #247

WETLAND #248

WETLAND #249

WETLAND #250

WETLAND #251

WETLAND #252

WETLAND #253

WETLAND #254

WETLAND #255

WETLAND #256

WETLAND #257

WETLAND #258

WETLAND #259

WETLAND #260

WETLAND #261

WETLAND #262

WETLAND #263

WETLAND #264

WETLAND #265

WETLAND #266

WETLAND #267

WETLAND #268

WETLAND #269

WETLAND #270

WETLAND #271

WETLAND #272

WETLAND #273

WETLAND #274

WETLAND #275

WETLAND #276

WETLAND #277

WETLAND #278

WETLAND #279

WETLAND #280

WETLAND #281

WETLAND #282

WETLAND #283

WETLAND #284

WETLAND #285

WETLAND #286

WETLAND #287

WETLAND #288

WETLAND #289

WETLAND #290

WETLAND #291

WETLAND #292

WETLAND #293

WETLAND #294

WETLAND #295

WETLAND #296

WETLAND #297

WETLAND #298

WETLAND #299

WETLAND #300

WETLAND #301

WETLAND #302

WETLAND #303

WETLAND #304

WETLAND #305

WETLAND #306

WETLAND #307

WETLAND #308

WETLAND #309

WETLAND #310

WETLAND #311

WETLAND #312

WETLAND #313

WETLAND #314

WETLAND #315

WETLAND #316

WETLAND #317

WETLAND #318

WETLAND #319

WETLAND #320

WETLAND #321

WETLAND #322

WETLAND #323

WETLAND #324

WETLAND #325

WETLAND #326

WETLAND #327

WETLAND #328

WETLAND #329

WETLAND #330

WETLAND #331

WETLAND #332

WETLAND #333

WETLAND #334

WETLAND #335

WETLAND #336

WETLAND #337

WETLAND #338

WETLAND #339

WETLAND #340

WETLAND #341

WETLAND #342

WETLAND #343

WETLAND #344

WETLAND #345

WETLAND #346

WETLAND #347

WETLAND #348

WETLAND #349

WETLAND #350

WETLAND #351

WETLAND #352

WETLAND #353

WETLAND #354

WETLAND #355

WETLAND #356

WETLAND #357

WETLAND #358

WETLAND #359

WETLAND #360

WETLAND #361

WETLAND #362

WETLAND #363

WETLAND #364

WETLAND #365

WETLAND #366

WETLAND #367

WETLAND #368

WETLAND #369

WETLAND #370

WETLAND #371

WETLAND #372

WETLAND #373

WETLAND #374

WETLAND #375

WETLAND #376

WETLAND #377

WETLAND #378

WETLAND #379

WETLAND #380

WETLAND #381

WETLAND #382

WETLAND #383

WETLAND #384

WETLAND #385

WETLAND #386

WETLAND #387

WETLAND #388

WETLAND #389

WETLAND #390

WETLAND #391

WETLAND #392

WETLAND #393

WETLAND #394

WETLAND #395

WETLAND #396

WETLAND #397

WETLAND #398

WETLAND #399

WETLAND #400

WETLAND #401

WETLAND #402

WETLAND #403

WETLAND #404

WETLAND #405

WETLAND #406

WETLAND #407

WETLAND #408

WETLAND #409

WETLAND #410

WETLAND #411

WETLAND #412

WETLAND #413

WETLAND #414

WETLAND #415

WETLAND #416

WETLAND #417

WETLAND #418

WETLAND #419

WETLAND #420

WETLAND #421

WETLAND #422

WETLAND #423

WETLAND #424

WETLAND #425

WETLAND #426

WETLAND #427

WETLAND #428

WETLAND #429

WETLAND #430

WETLAND #431

WETLAND #432

WETLAND #433

WETLAND #434

WETLAND #435

WETLAND #436

WETLAND #437

WETLAND #438

WETLAND #439

WETLAND #440

WETLAND #441

WETLAND #442

WETLAND #443

WETLAND #444

WETLAND #445

WETLAND #446

WETLAND #447

WETLAND #448

WETLAND #449

WETLAND #450

WETLAND #451

WETLAND #452

WETLAND #453

WETLAND #454

WETLAND #455

WETLAND #456

WETLAND #457

WETLAND #458

WETLAND #459

WETLAND #460

WETLAND #461

WETLAND #462

WETLAND #463

WETLAND #464

WETLAND #465

WETLAND #466

WETLAND #467

WETLAND #468

WETLAND #469

WETLAND #470

WETLAND #471

WETLAND #472

WETLAND #473

WETLAND #474

WETLAND #475

WETLAND #476

WETLAND #477

WETLAND #478

WETLAND #479

WETLAND #480

WETLAND #481

WETLAND #482

WETLAND #483

WETLAND #484

WETLAND #485

WETLAND #486

WETLAND #487

WETLAND #488

WETLAND #489

WETLAND #490

WETLAND #491

WETLAND #492

WETLAND #493

WETLAND #494

WETLAND #495

WETLAND #496

WETLAND #497

WETLAND #498

WETLAND #499

WETLAND #500

WETLAND #501

WETLAND #502

WETLAND #503

WETLAND #504

WETLAND #505

WETLAND #506

WETLAND #507

WETLAND #508

WETLAND #509

WETLAND #510

WETLAND #511

WETLAND #512

WETLAND #513

WETLAND #514

WETLAND #515

WETLAND #516

WETLAND #517

WETLAND #518

WETLAND #519

WETLAND #520

WETLAND #521

WETLAND #522

WETLAND #523

WETLAND #524

WETLAND #525

WETLAND #526

WETLAND #527

WETLAND #528

WETLAND #529

WETLAND #530

WETLAND #531

WETLAND #532

WETLAND #533

WETLAND #534

WETLAND #535

WETLAND #536

WETLAND #537

WETLAND #538

WETLAND #539

WETLAND #540

WETLAND #541

WETLAND #542

WETLAND #543

WETLAND #544

WETLAND #545

WETLAND #546

WETLAND #547

WETLAND #548

WETLAND #549

WETLAND #550

WETLAND #551

WETLAND #552

WETLAND #553

WETLAND #554

WETLAND #555

WETLAND #556

WETLAND #557

WETLAND #558

WETLAND #559

WETLAND #560

WETLAND #561

WETLAND #562

WETLAND #563

WETLAND #564

WETLAND #565

WETLAND #566

WETLAND #567

WETLAND #568

WETLAND #569

WETLAND #570

WETLAND #571

WETLAND #572

WETLAND #573

WETLAND #574

WETLAND #575

WETLAND #576

WETLAND #577

WETLAND #578

WETLAND #579

WETLAND #580

WETLAND #581

WETLAND #582

WETLAND #583

WETLAND #584

WETLAND #585

WETLAND #586

WETLAND #587

WETLAND #588

WETLAND #589

WETLAND #590

WETLAND #591

WETLAND #592

WETLAND #593

WETLAND #594

WETLAND #595

WETLAND #596

WETLAND #597

WETLAND #598

WETLAND #599

WETLAND #600

WETLAND #601

WETLAND #602

WETLAND #603

WETLAND #604

WETLAND #605

WETLAND #606

WETLAND #607

WETLAND #608

WETLAND #609

WETLAND #610

WETLAND #611

WETLAND #612

WETLAND #613

WETLAND #614

WETLAND #615

WETLAND #616

WETLAND #617

WETLAND #618

WETLAND #619

WETLAND #620

WETLAND #621

WETLAND #622

WETLAND #623

WETLAND #624

WETLAND #625

WETLAND #626

WETLAND #627

WETLAND #628

WETLAND #629

WETLAND #630

WETLAND #631

WETLAND #632

WETLAND #633

WETLAND #634

WETLAND #635

WETLAND #636

WETLAND #637

WETLAND #638

WETLAND #639

WETLAND #640

WETLAND #641

WETLAND #642

WETLAND #643

WETLAND #644

WETLAND #645

WETLAND #646

WETLAND #647

WETLAND #648

WETLAND #649

WETLAND #650

WETLAND #651

WETLAND #652

WETLAND #653

WETLAND #654

WETLAND #655

WETLAND #656

WETLAND #657

WETLAND #658

WETLAND #659

WETLAND #660

WETLAND #661

WETLAND #662

WETLAND #663

WETLAND #664

WETLAND #665

WETLAND #666

WETLAND #667

WETLAND #668

WETLAND #669

WETLAND #670

WETLAND #671

WETLAND #672

WETLAND #673

WETLAND #674

WETLAND #675

WETLAND #676

WETLAND #677

WETLAND #678

WETLAND #679

WETLAND #680

WETLAND #681

WETLAND #682

WETLAND #683

WETLAND #684

WETLAND #685

WETLAND #686

WETLAND #687

WETLAND #688

WETLAND #689

WETLAND #690

WETLAND #691

WETLAND #692

WETLAND #693

WETLAND #694

WETLAND #695

WETLAND #696

WETLAND #697

WETLAND #698

WETLAND #699

WETLAND #700

WETLAND #701

WETLAND #702

WETLAND #703

WETLAND #704

WETLAND #705

WETLAND #706

WETLAND #707

WETLAND #708

WETLAND #709

WETLAND #710

WETLAND #711

WETLAND #712

WETLAND #713

WETLAND #714

WETLAND #715

WETLAND #716

WETLAND #717

WETLAND #718

WETLAND #719

WETLAND #720

WETLAND #721

WETLAND #722

WETLAND #723

WETLAND #724

WETLAND #725

WETLAND #726

WETLAND #727

WETLAND #728

WETLAND #729

WETLAND #730

WETLAND #731

WETLAND #732

WETLAND #733

WETLAND #734

WETLAND #735

WETLAND #736

WETLAND #737

WETLAND #738

WETLAND #739

WETLAND #740

WETLAND #741

WETLAND #742

WETLAND #743

WETLAND #744

WETLAND #745

WETLAND #746

WETLAND #747

WETLAND #748

WETLAND #749

WETLAND #750

WETLAND #751

WETLAND #752

WETLAND #753

WETLAND #754

WETLAND #755

WETLAND #756

WETLAND #757

WETLAND #758

WETLAND #759

WETLAND #760

WETLAND #761

WETLAND #762

WETLAND #763

WETLAND #764

WETLAND #765

WETLAND #766

WETLAND #767

WETLAND #768

WETLAND #769

WETLAND #770

WETLAND #771

WETLAND #772

WETLAND #773

WETLAND #774

WETLAND #775

WETLAND #776

WETLAND #777

WETLAND #778

WETLAND #779

WETLAND #780

WETLAND #781

WETLAND #782

WETLAND #783

WETLAND #784

WETLAND #785

WETLAND #786

WETLAND #787

WETLAND #788

WETLAND #789

WETLAND #790

WETLAND #791

WETLAND #792

WETLAND #793

WETLAND #794

WETLAND #795

WETLAND #796

WETLAND #797

WETLAND #798

WETLAND #799

WETLAND #800

WETLAND #801

WETLAND #802

WETLAND #803

WETLAND #804

WETLAND #805

WETLAND #806

WETLAND #807

WETLAND #808

WETLAND #809

WETLAND #810

WETLAND #811

WETLAND #812

WETLAND #813

WETLAND #814

WETLAND #815

WETLAND #816

WETLAND #817

WETLAND #818

WETLAND #819

WETLAND #820

WETLAND #821

WETLAND #822

WETLAND #823

WETLAND #824

WETLAND #825

WETLAND #826

WETLAND #827

WETLAND #828

WETLAND #829

WETLAND #830

WETLAND #831

WETLAND #832

WETLAND #833

WETLAND #834

WETLAND #835

WETLAND #836

WETLAND #837

WETLAND #838

WETLAND #839

WETLAND #840

WETLAND #841

WETLAND #842

WETLAND #843

WETLAND #844

WETLAND #845

WETLAND #846

WETLAND #847

WETLAND #848

WETLAND #849

WETLAND #850

WETLAND #851

WETLAND #852

WETLAND #853

WETLAND #854

WETLAND #855

WETLAND #856

WETLAND #857

WETLAND #858

WETLAND #859

WETLAND #860

WETLAND #861

WETLAND #862

WETLAND #863

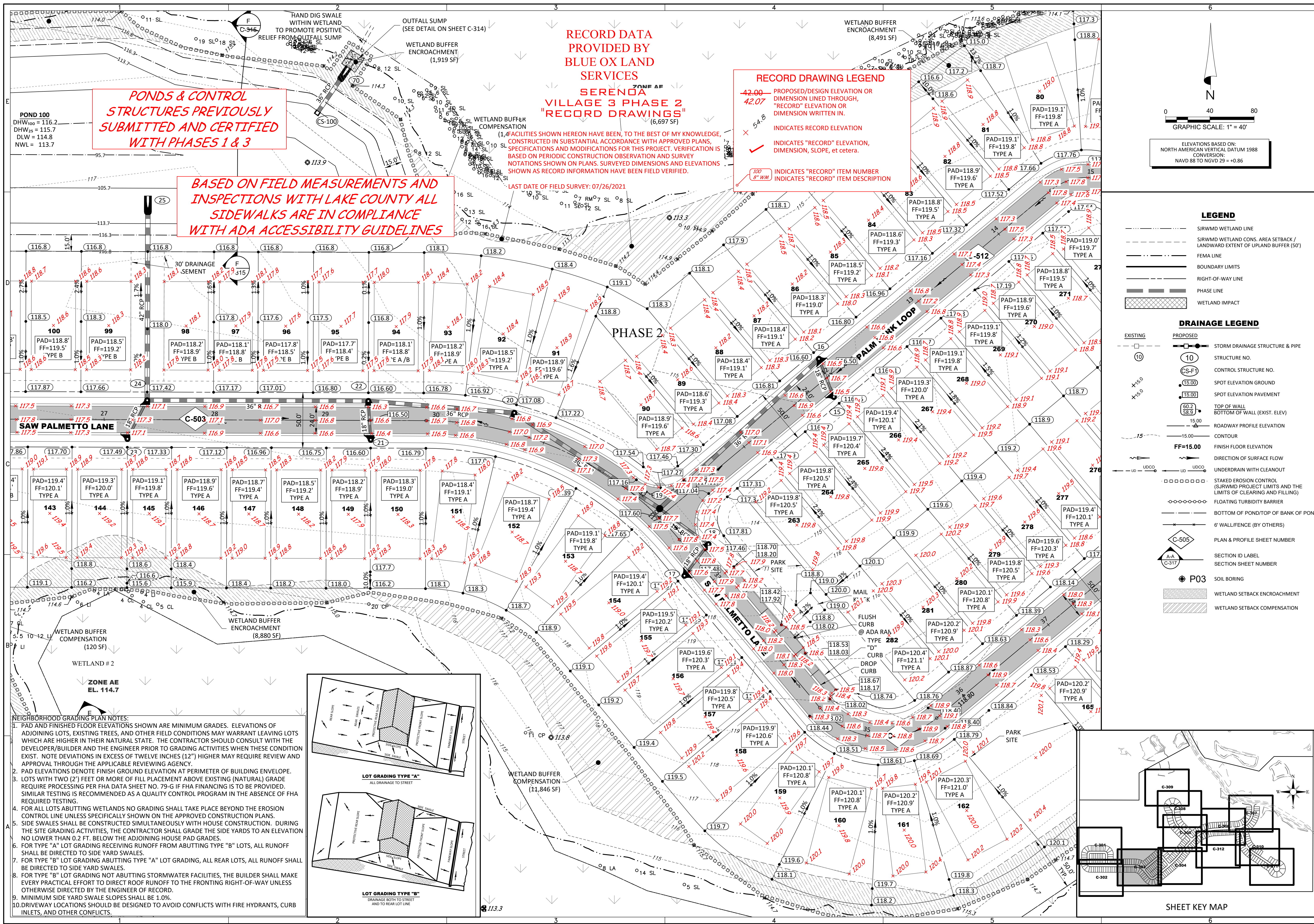
WETLAND #864

WETLAND #865

WETLAND #866

WETLAND #867

WETLAND #868</



PONDS & CONTROL STRUCTURES PREVIOUSLY SUBMITTED AND CERTIFIED WITH PHASES 1 & 3

BASED ON FIELD MEASUREMENTS AND INSPECTIONS WITH LAKE COUNTY ALL SIDEWALKS ARE IN COMPLIANCE WITH ADA ACCESSIBILITY GUIDELINES

RECORD DATA PROVIDED BY BLUE OX LAND SERVICES

SERENOA VILLAGE 3 PHASE 2 "RECORD DRAWINGS" (6,697 SF)

RECORD DRAWING LEGEND

- 42.00 - PROPOSED/DESIGN ELEVATION OR DIMENSION LINED THROUGH, "RECORD" ELEVATION OR DIMENSION WRITTEN IN.
- 54.8 - INDICATES RECORD ELEVATION
- INDICATES "RECORD" ELEVATION, DIMENSION, SLOPE, et cetera.
- INDICATES "RECORD" ITEM NUMBER
- INDICATES "RECORD" ITEM DESCRIPTION

ELEVATIONS BASED ON:
NORTH AMERICAN VERTICAL DATUM 1988
CONVERSION:
NAVD 88 TO NGVD 29 = +0.86

LEGEND

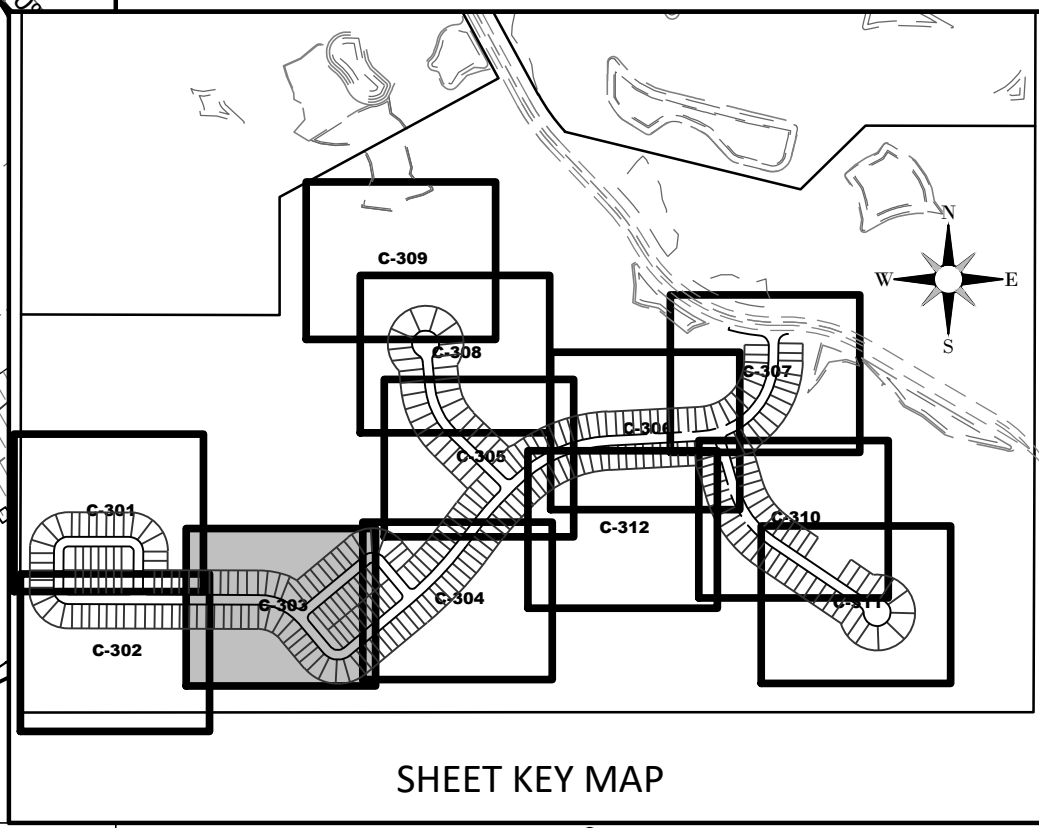
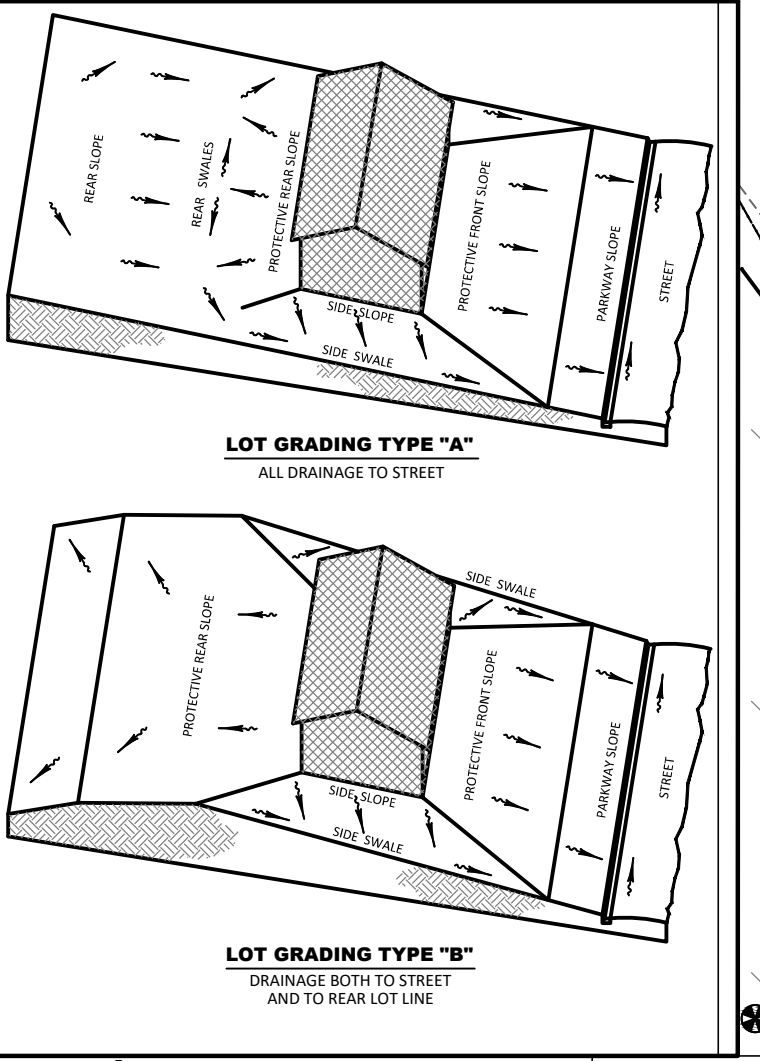
- SIRWMD WETLAND LINE
- SIRWMD WETLAND CONS. AREA SETBACK / LANDWARD EXTENT OF UPLAND BUFFER (50')
- FEMA LINE
- BOUNDARY LIMITS
- RIGHT-OF-WAY LINE
- PHASE LINE
- WETLAND IMPACT

DRAINAGE LEGEND

- EXISTING
- PROPOSED
- STORM DRAINAGE STRUCTURE & PIPE
- STRUCTURE NO.
- CONTROL STRUCTURE NO.
- SPOT ELEVATION GROUND
- SPOT ELEVATION PAVEMENT
- TOP OF WALL
- BOTTOM OF WALL (EXIST. ELEV)
- ROADWAY PROFILE ELEVATION
- CONTOUR
- FF=15.00
- FINISH FLOOR ELEVATION
- DIRECTION OF SURFACE FLOW
- UNDERDRAIN WITH CLEANOUT
- STAKED EROSION CONTROL (SERVING PROJECT LIMITS AND THE LIMITS OF CLEARING AND FILLING)
- FLOATING TURBIDITY BARRIER
- BOTTOM OF POND/TOP OF BANK OF POND
- 6" WALL/FENCE (BY OTHERS)
- PLAN & PROFILE SHEET NUMBER
- SECTION ID LABEL
- SECTION SHEET NUMBER
- SOIL BORING
- WETLAND SETBACK ENCROACHMENT
- WETLAND SETBACK COMPENSATION

NEIGHBORHOOD GRADING PLAN NOTES:

- PAD AND FINISHED FLOOR ELEVATIONS SHOWN ARE MINIMUM GRADES. ELEVATIONS OF ADJOINING LOTS, EXISTING TREES, AND OTHER FIELD CONDITIONS MAY WARRANT LEAVING LOTS WHICH ARE HIGHER IN THEIR NATURAL STATE. THE CONTRACTOR SHOULD CONSULT WITH THE DEVELOPER/BUILDER AND THE ENGINEER PRIOR TO GRADING ACTIVITIES WHEN THIS CONDITION EXISTS. NOTE DEVIATIONS IN EXCESS OF TWELVE INCHES (12") HIGHER MAY REQUIRE REVIEW AND APPROVAL THROUGH THE APPLICABLE REVIEWING AGENCY.
- PAD ELEVATIONS DENOTE FINISH GROUND ELEVATION AT PERIMETER OF BUILDING ENVELOPE.
- LOTS WITH TWO (2) FEET OR MORE OF FILL PLACEMENT ABOVE EXISTING (NATURAL) GRADE REQUIRE PROCESSING PER FHA DATA SHEET NO. 79-G IF FHA FINANCING IS TO BE PROVIDED. SIMILAR TESTING IS RECOMMENDED AS A QUALITY CONTROL PROGRAM IN THE ABSENCE OF FHA REQUIRED TESTING.
- FOR ALL LOTS ABUTTING WETLANDS NO GRADING SHALL TAKE PLACE BEYOND THE EROSION CONTROL LINE UNLESS SPECIFICALLY SHOWN ON THE APPROVED CONSTRUCTION PLANS. SIDE SWALES SHALL BE CONSTRUCTED SIMULTANEOUSLY WITH HOUSE CONSTRUCTION. DURING THE SITE GRADING ACTIVITIES, THE CONTRACTOR SHALL GRADE THE SIDE YARDS TO AN ELEVATION NO LOWER THAN 0.2 FT. BELOW THE ADJOINING HOUSE PAD GRADES.
- FOR TYPE "A" LOT GRADING RECEIVING RUNOFF FROM ABUTTING TYPE "B" LOTS, ALL RUNOFF SHALL BE DIRECTED TO SIDE YARD SWALES.
- FOR TYPE "B" LOT GRADING ABUTTING TYPE "A" LOT GRADING, ALL REAR LOTS, ALL RUNOFF SHALL BE DIRECTED TO SIDE YARD SWALES.
- FOR TYPE "B" LOT GRADING NOT ABUTTING STORMWATER FACILITIES, THE BUILDER SHALL MAKE EVERY PRACTICAL EFFORT TO DIRECT ROOF RUNOFF TO THE FRONTING RIGHT-OF-WAY UNLESS OTHERWISE DIRECTED BY THE ENGINEER OF RECORD.
- MINIMUM SIDE YARD SWALE SLOPES SHALL BE 1.0%.
- DRIVEWAY LOCATIONS SHOULD BE DESIGNED TO AVOID CONFLICTS WITH FIRE HYDRANTS, CURB INLETS, AND OTHER CONFLICTS.



HEIDT DESIGN
Civil Engineering • Planning & GIS
Transportation Engineering
Ecological Services • Landscape Architecture

5904-A Hampton Oaks Pkwy.
Tampa, Florida 33610
Office: 813-253-5311
Fax: 813-464-7629
www.HeidtDesign.com

SERENOA VILLAGE 3 - PHASE 1, 2 & 3
GRADING & DRAINAGE PLAN

PREPARED FOR: **VK AVALON GROVES, LLC**

NO.	DATE	DESCRIPTION
1	02/07/2021	ADDED PH2 RECORD INFORMATION
2	03/08/2021	REV. PAD ELEV./FF GRADING PHASE 2, & REMOVED LOTS 163 & 164
3	05/27/2020	MOVED STR 19
4	03/20/2019	REV. WETLANDS MAP, LOTS & GRADES
5	11/13/2019	REV. PARKING GRADES
6	11/08/2019	REVISED SUBMITTAL

PROJECT NO.: KLP-AG-1089
FILE: GD-REC
DESIGN BY: FRANCIS
DRAWN BY: JLOAIZA

STATE OF FLORIDA
PROFESSIONAL ENGINEER

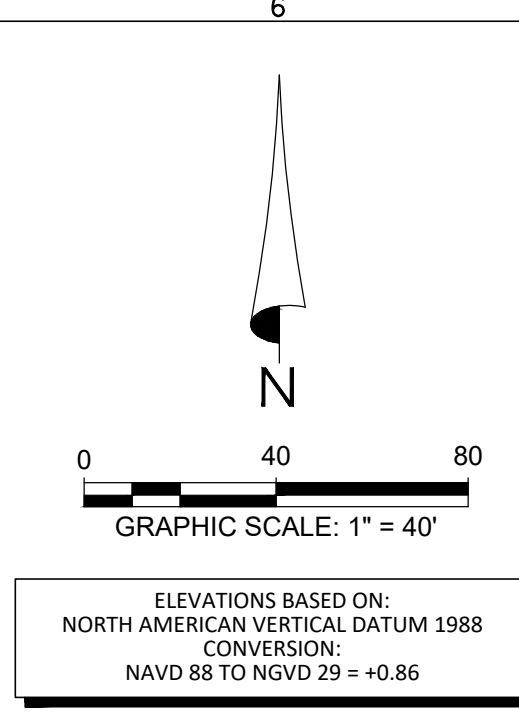
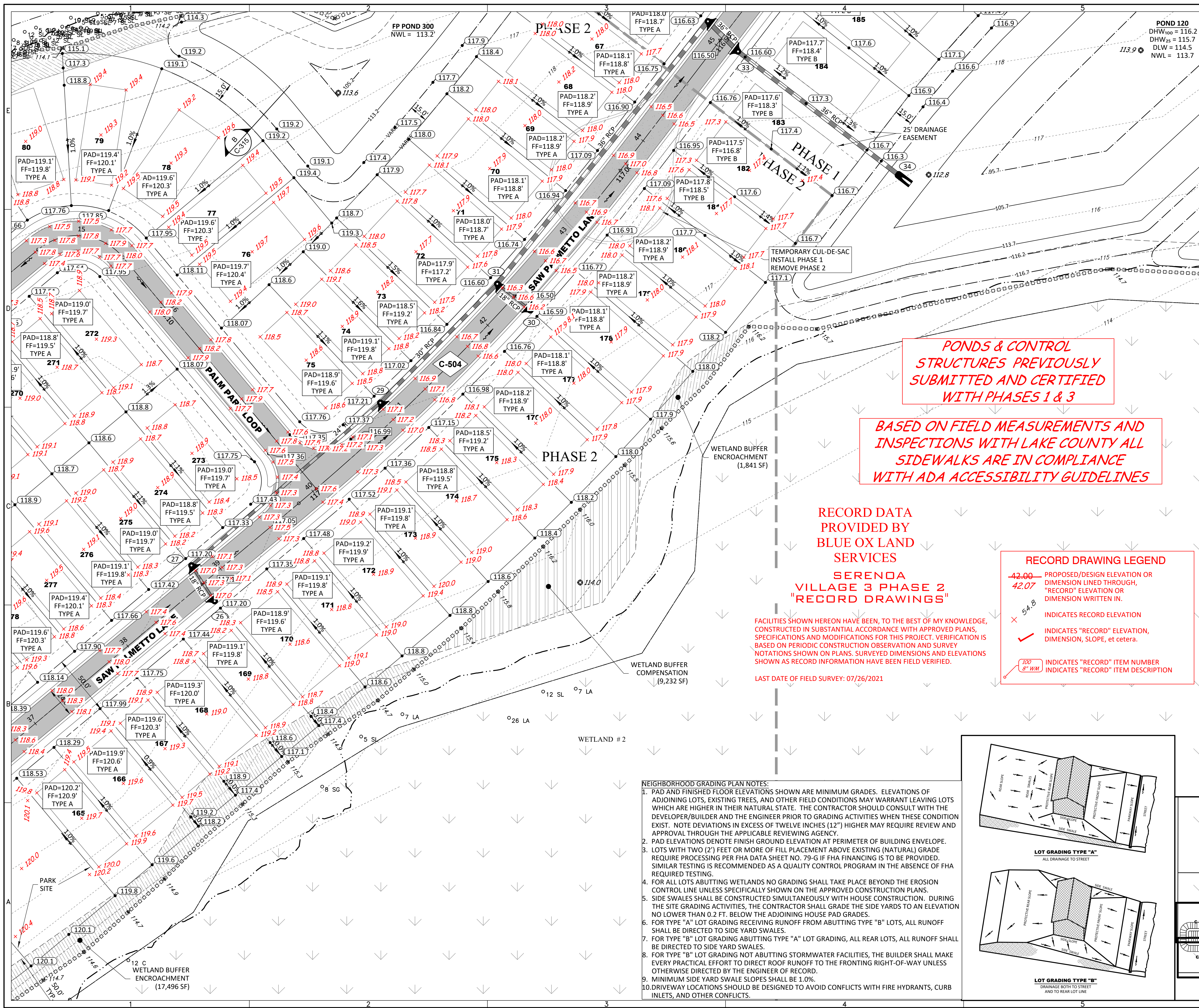
Timothy M. Plate, State of Florida,
Professional Engineer, License No. 41153

This item has been digitally
signed and sealed by
Timothy M. Plate, P.E. on the date
indicated here.

Printed copies of this document
are not considered signed and
sealed and the signature must be
verified on any electronic copies.

TIMOTHY M. PLATE, P.E.
DATE: _____
LICENSE NO. 41153

C-303



LEGEND

- SIRWMD WETLAND LINE
- SIRWMD WETLAND CONS. AREA SETBACK / LANDWARD EXTENT OF UPLAND BUFFER (50')
- FEMA LINE
- BOUNDARY LIMITS
- RIGHT-OF-WAY LINE
- PHASE LINE
- WETLAND IMPACT

DRAINAGE LEGEND

EXISTING	PROPOSED	DESCRIPTION
(10)	(10)	STORM DRAINAGE STRUCTURE & PIPE STRUCTURE NO.
(C-S-F)	(C-S-F)	CONTROL STRUCTURE NO.
(15.00)	(15.00)	SPOT ELEVATION GROUND
(15.00)	(15.00)	SPOT ELEVATION PAVEMENT
(60.2 / 58.9)	(60.2 / 58.9)	TOP OF WALL / BOTTOM OF WALL (EXIST. ELEV)
(15.00)	(15.00)	ROADWAY PROFILE ELEVATION
(15)	(15)	CONTOUR
	FF=15.00	FINISH FLOOR ELEVATION
		DIRECTION OF SURFACE FLOW
		UNDERDRAIN WITH CLEANOUT
		STAKED EROSION CONTROL (SIRWMD PROJECT LIMITS AND THE LIMITS OF CLEARING AND FILLING)
		FLOATING TURBIDITY BARRIER
		BOTTOM OF POND/TOP OF BANK OF POND
		6' WALL/FENCE (BY OTHERS)
		PLAN & PROFILE SHEET NUMBER
		SECTION ID LABEL
		SECTION SHEET NUMBER
		SOIL BORING
		WETLAND SETBACK ENCROACHMENT
		WETLAND SETBACK COMPENSATION

PONDS & CONTROL STRUCTURES PREVIOUSLY SUBMITTED AND CERTIFIED WITH PHASES 1 & 3

BASED ON FIELD MEASUREMENTS AND INSPECTIONS WITH LAKE COUNTY ALL SIDEWALKS ARE IN COMPLIANCE WITH ADA ACCESSIBILITY GUIDELINES

RECORD DATA PROVIDED BY BLUE OX LAND SERVICES SERENOA VILLAGE 3 PHASE 2 "RECORD DRAWINGS"

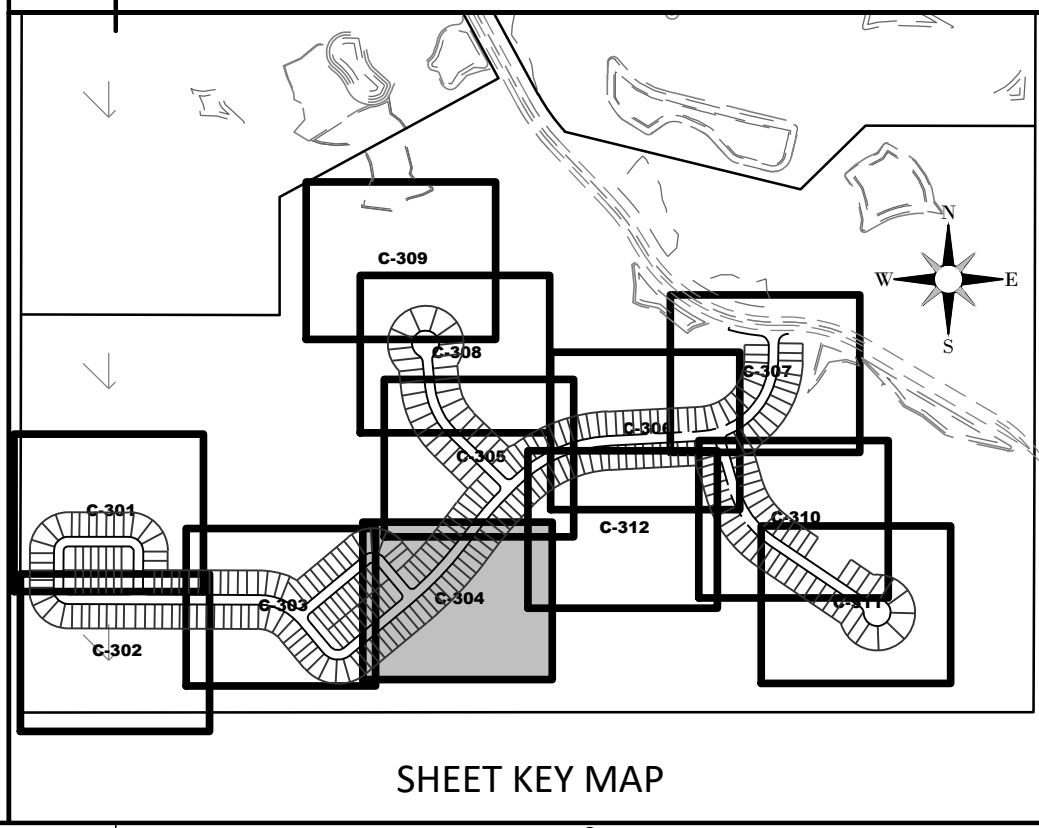
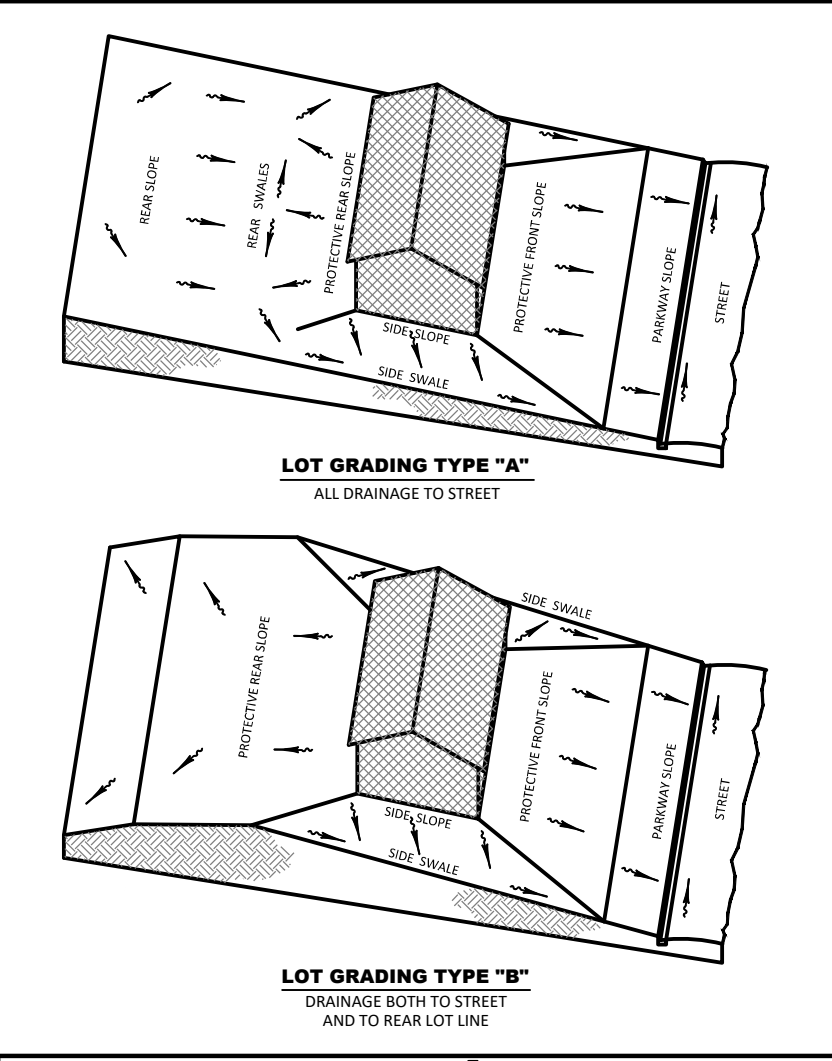
FACILITIES SHOWN HEREON HAVE BEEN, TO THE BEST OF MY KNOWLEDGE, CONSTRUCTED IN SUBSTANTIAL ACCORDANCE WITH APPROVED PLANS, SPECIFICATIONS AND MODIFICATIONS FOR THIS PROJECT. VERIFICATION IS BASED ON PERIODIC CONSTRUCTION OBSERVATION AND SURVEY NOTATIONS SHOWN ON PLANS. SURVEYED DIMENSIONS AND ELEVATIONS NOTAS AS RECORD INFORMATION HAVE BEEN FIELD VERIFIED.

LAST DATE OF FIELD SURVEY: 07/26/2021

RECORD DRAWING LEGEND

- 42.00 PROPOSED/DESIGN ELEVATION OR DIMENSION LINED THROUGH, "RECORD" ELEVATION OR DIMENSION WRITTEN IN.
- 42.07 "RECORD" ELEVATION OR DIMENSION WRITTEN IN.
- 5-4.8 INDICATES RECORD ELEVATION
- INDICATES "RECORD" ELEVATION, DIMENSION, SLOPE, et cetera.
- INDICATES "RECORD" ITEM NUMBER
- INDICATES "RECORD" ITEM DESCRIPTION

- NEIGHBORHOOD GRADING PLAN NOTES:**
- PAD AND FINISHED FLOOR ELEVATIONS SHOWN ARE MINIMUM GRADES. ELEVATIONS OF ADJOINING LOTS, EXISTING TREES, AND OTHER FIELD CONDITIONS MAY WARRANT LEAVING LOTS WHICH ARE HIGHER IN THEIR NATURAL STATE. THE CONTRACTOR SHOULD CONSULT WITH THE DEVELOPER/BUILDER AND THE ENGINEER PRIOR TO GRADING ACTIVITIES WHEN THESE CONDITIONS EXIST. NOTE DEVIATIONS IN EXCESS OF TWELVE INCHES (12") HIGHER MAY REQUIRE REVIEW AND APPROVAL THROUGH THE APPLICABLE REVIEWING AGENCY.
 - PAD ELEVATIONS DENOTE FINISH GROUND ELEVATION AT PERIMETER OF BUILDING ENVELOPE.
 - LOTS WITH TWO (2') FEET OR MORE OF FILL PLACEMENT ABOVE EXISTING (NATURAL) GRADE REQUIRE PROCESSING PER FHA DATA SHEET NO. 79-G IF FHA FINANCING IS TO BE PROVIDED. SIMILAR TESTING IS RECOMMENDED AS A QUALITY CONTROL PROGRAM IN THE ABSENCE OF FHA REQUIRED TESTING.
 - FOR ALL LOTS ABUTTING WETLANDS NO GRADING SHALL TAKE PLACE BEYOND THE EROSION CONTROL LINE UNLESS SPECIFICALLY SHOWN ON THE APPROVED CONSTRUCTION PLANS.
 - SIDE SWALES SHALL BE CONSTRUCTED SIMULTANEOUSLY WITH HOUSE CONSTRUCTION. DURING THE SITE GRADING ACTIVITIES, THE CONTRACTOR SHALL GRADE THE SIDE YARDS TO AN ELEVATION NO LOWER THAN 0.2 FT. BELOW THE ADJOINING HOUSE PAD GRADES.
 - FOR TYPE "A" LOT GRADING RECEIVING RUNOFF FROM ABUTTING TYPE "B" LOTS, ALL RUNOFF SHALL BE DIRECTED TO SIDE YARD SWALES.
 - FOR TYPE "B" LOT GRADING ABUTTING TYPE "A" LOT GRADING, ALL REAR LOTS, ALL RUNOFF SHALL BE DIRECTED TO SIDE YARD SWALES.
 - FOR TYPE "B" LOT GRADING NOT ABUTTING STORMWATER FACILITIES, THE BUILDER SHALL MAKE EVERY PRACTICAL EFFORT TO DIRECT ROOF RUNOFF TO THE FRONTING RIGHT-OF-WAY UNLESS OTHERWISE DIRECTED BY THE ENGINEER OF RECORD.
 - MINIMUM SIDE YARD SWALE SLOPES SHALL BE 1.0%.
 - DRIVEWAY LOCATIONS SHOULD BE DESIGNED TO AVOID CONFLICTS WITH FIRE HYDRANTS, CURB INLETS, AND OTHER CONFLICTS.



HEIDT DESIGN
Civil Engineering • Planning & GIS
Transportation Engineering
Ecological Services • Landscape Architecture

5904-A Hampton Oaks Pkwy.
Tampa, Florida 33610
Office: 813-253-5311
Fax: 813-464-7629
www.HeidtDesign.com

SERENOA VILLAGE 3 - PHASE 1, 2 & 3 GRADING & DRAINAGE PLAN

PREPARED FOR: **VK AVALON GROVES, LLC**

NO.	DATE	DESCRIPTION
1	02/07/2021	ADDED PH2 RECORD INFORMATION

REV.	DATE	DESCRIPTION
12	11/15/2021	REV. LABEL POSITION TO SHOW GRADE - LOTS 181, 182 & 183
9	3/08/2021	REV. PAD ELEV./FF GRADES PHASE 2, & REMOVED LOTS 163 & 164
3	05/27/2020	REV. WETLANDS IMP. LOTS & GRADES & REMOVED STR 28
2	03/20/2020	REV. WETLANDS IMP. LOTS & GRADES
1	11/08/2019	REVISED SUBMITTAL

PROJECT NO: KLP-AG-1089
FILE: GD-REF
DESIGN BY: FRANCIS
DRAWN BY: JLOAIZA

STATE OF FLORIDA
PROFESSIONAL ENGINEER

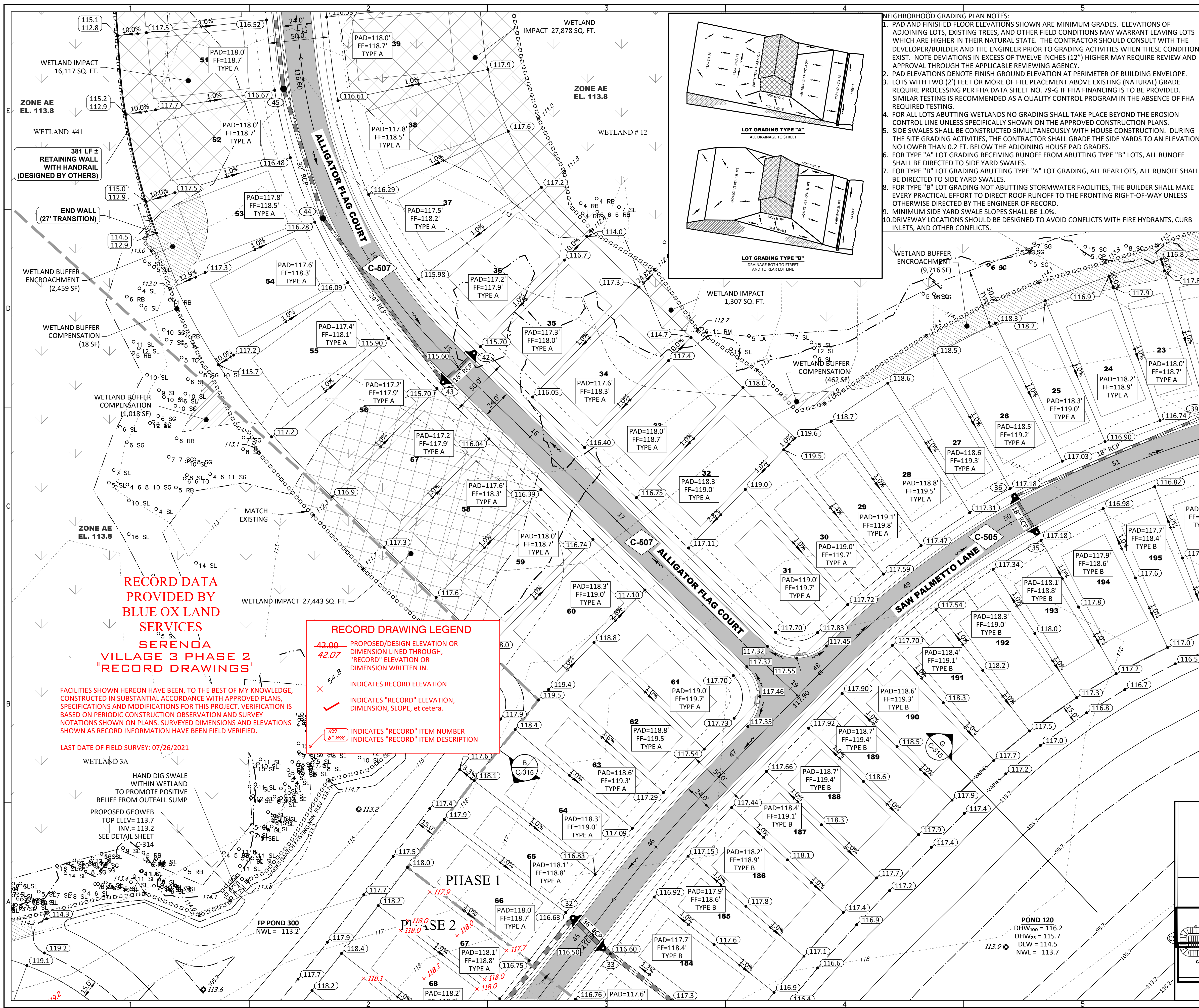
Timothy M. Plate, State of Florida, Professional Engineer, License No. 41153

This item has been digitally signed and sealed by Timothy M. Plate, P.E. on the date indicated herein.

Printed copies of this document are not considered signed and sealed and the signature must be verified on any electronic copies.

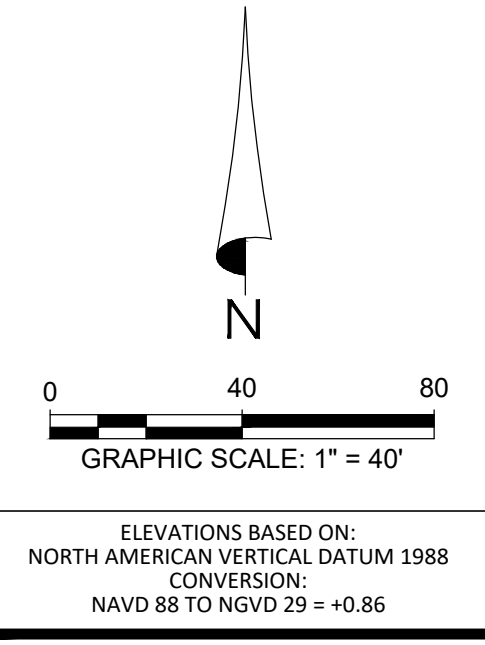
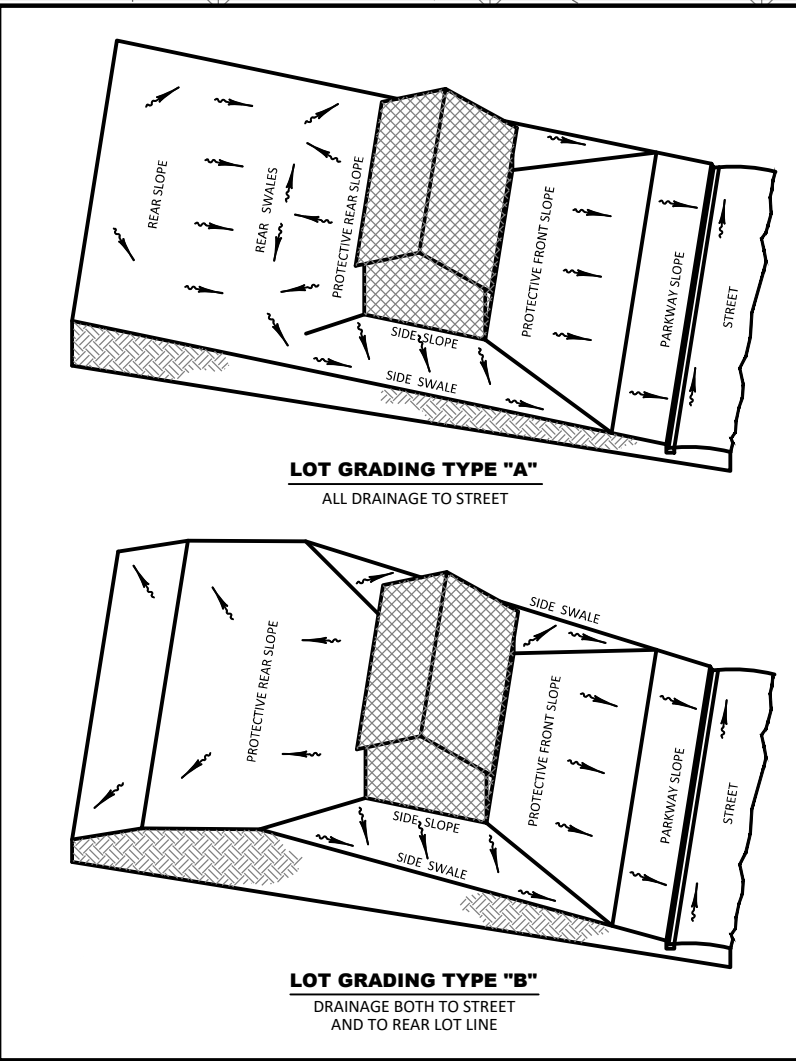
TIMOTHY M. PLATE, P.E.
DATE: _____
LICENSE NO. 41153

C-304



NEIGHBORHOOD GRADING PLAN NOTES:

- PAD AND FINISHED FLOOR ELEVATIONS SHOWN ARE MINIMUM GRADES. ELEVATIONS OF ADJOINING LOTS, EXISTING TREES, AND OTHER FIELD CONDITIONS MAY WARRANT LEAVING LOTS WHICH ARE HIGHER IN THEIR NATURAL STATE. THE CONTRACTOR SHOULD CONSULT WITH THE DEVELOPER/BUILDER AND THE ENGINEER PRIOR TO GRADING ACTIVITIES WHEN THESE CONDITIONS EXIST. NOTE DEVIATIONS IN EXCESS OF TWELVE INCHES (12") HIGHER MAY REQUIRE REVIEW AND APPROVAL THROUGH THE APPLICABLE REVIEWING AGENCY.
- PAD ELEVATIONS DENOTE FINISH GROUND ELEVATION AT PERIMETER OF BUILDING ENVELOPE. LOTS WITH TWO (2) FEET OR MORE OF FILL PLACEMENT ABOVE EXISTING (NATURAL) GRADE REQUIRE PROCESSING PER FHA DATA SHEET NO. 79-G IF FHA FINANCING IS TO BE PROVIDED. SIMILAR TESTING IS RECOMMENDED AS A QUALITY CONTROL PROGRAM IN THE ABSENCE OF FHA REQUIRED TESTING.
- FOR ALL LOTS ABUTTING WETLANDS NO GRADING SHALL TAKE PLACE BEYOND THE EROSION CONTROL LINE UNLESS SPECIFICALLY SHOWN ON THE APPROVED CONSTRUCTION PLANS.
- SIDE SWALES SHALL BE CONSTRUCTED SIMULTANEOUSLY WITH HOUSE CONSTRUCTION. DURING THE SITE GRADING ACTIVITIES, THE CONTRACTOR SHALL GRADE THE SIDE YARDS TO AN ELEVATION NO LOWER THAN 0.2 FT. BELOW THE ADJOINING HOUSE PAD GRADES.
- FOR TYPE "A" LOT GRADING RECEIVING RUNOFF FROM ABUTTING TYPE "B" LOTS, ALL RUNOFF SHALL BE DIRECTED TO SIDE YARD SWALES.
- FOR TYPE "B" LOT GRADING ABUTTING TYPE "A" LOT GRADING, ALL REAR LOTS, ALL RUNOFF SHALL BE DIRECTED TO SIDE YARD SWALES.
- FOR TYPE "B" LOT GRADING NOT ABUTTING STORMWATER FACILITIES, THE BUILDER SHALL MAKE EVERY PRACTICAL EFFORT TO DIRECT ROOF RUNOFF TO THE FRONTING RIGHT-OF-WAY UNLESS OTHERWISE DIRECTED BY THE ENGINEER OF RECORD.
- MINIMUM SIDE YARD SWALE SLOPES SHALL BE 1.0%.
- DRIVEWAY LOCATIONS SHOULD BE DESIGNED TO AVOID CONFLICTS WITH FIRE HYDRANTS, CURB INLETS, AND OTHER CONFLICTS.



LEGEND

- SIRWMD WETLAND LINE
- SIRWMD WETLAND CONS. AREA SETBACK / LANDWARD EXTENT OF UPLAND BUFFER (50')
- FEMA LINE
- BOUNDARY LIMITS
- RIGHT-OF-WAY LINE
- PHASE LINE
- WETLAND IMPACT

DRAINAGE LEGEND

- EXISTING: 10 (Structure No.), 15.00 (Spot Elevation), 60.2 (Top of Wall), 55.9 (Bottom of Wall), 15.00 (Roadway Profile), 15.00 (Contour), FF=15.00 (Finish Floor), UDDCO (Underdrain), Staked Erosion Control, Floating Turbidity Barrier, Bottom of Pond/Top of Bank of Pond, 6' Wall/Fence, Plan & Profile Sheet Number, Section ID Label, Section Sheet Number, P03 (Soil Boring), Wetland Setback Encroachment, Wetland Setback Compensation
- PROPOSED: 10 (Structure No.), C-S-F (Control Structure No.), 15.00 (Spot Elevation), 60.2 (Top of Wall), 55.9 (Bottom of Wall), 15.00 (Roadway Profile), FF=15.00 (Finish Floor), UDDCO (Underdrain), Staked Erosion Control, Floating Turbidity Barrier, Bottom of Pond/Top of Bank of Pond, 6' Wall/Fence, Plan & Profile Sheet Number, Section ID Label, Section Sheet Number, P03 (Soil Boring), Wetland Setback Encroachment, Wetland Setback Compensation

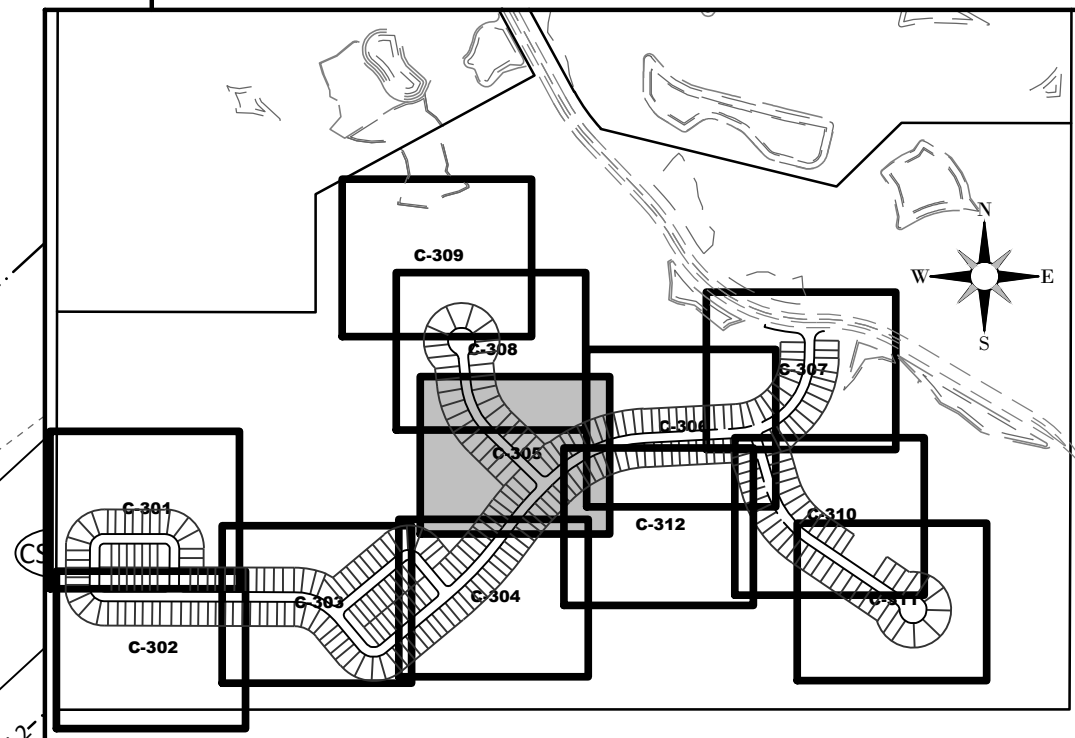
RECORD DATA PROVIDED BY BLUE OX LAND SERVICES
SERENOA VILLAGE 3 PHASE 2 "RECORD DRAWINGS"

RECORD DRAWING LEGEND

- 42.00 - PROPOSED/DESIGN ELEVATION OR DIMENSION LINED THROUGH, "RECORD" ELEVATION OR DIMENSION WRITTEN IN.
- 54.8 - INDICATES RECORD ELEVATION
- ✓ - INDICATES "RECORD" ELEVATION, DIMENSION, SLOPE, et cetera.
- 103 (8" W) - INDICATES "RECORD" ITEM NUMBER
- INDICATES "RECORD" ITEM DESCRIPTION

FACILITIES SHOWN HEREON HAVE BEEN, TO THE BEST OF MY KNOWLEDGE, CONSTRUCTED IN SUBSTANTIAL ACCORDANCE WITH APPROVED PLANS, SPECIFICATIONS AND MODIFICATIONS FOR THIS PROJECT. VERIFICATION IS BASED ON PERIODIC CONSTRUCTION OBSERVATION AND SURVEY NOTATIONS SHOWN ON PLANS. SURVEYED DIMENSIONS AND ELEVATIONS SHOWN AS RECORD INFORMATION HAVE BEEN FIELD VERIFIED.

LAST DATE OF FIELD SURVEY: 07/26/2021



HEIDT DESIGN
 Civil Engineering • Planning & GIS
 Transportation Engineering
 Ecological Services • Landscape Architecture

5904-A Hampton Oaks Pkwy.
 Tampa, Florida 33610
 Office: 813-253-5311
 Fax: 813-464-7629
 www.HeidtDesign.com

SERENOA VILLAGE 3 - PHASE 1, 2 & 3
GRADING & DRAINAGE PLAN

PREPARED FOR: **VK AVALON GROVES, LLC**

NO.	DATE	DESCRIPTION
1	03/08/2021	REV. PAD ELEV./FF GRADINGS PHASE 2
2	03/20/2021	REV. WETLANDS MAP, LOTS & GRADINGS
3	11/08/2021	REVISION SUBMITTAL

PROJECT NO.: KLP-AG-1089
 FILE: GD-REC
 DESIGN BY: FRANCIS
 DRAWN BY: JLOAIZA

STATE OF FLORIDA
 PROFESSIONAL ENGINEER

Timothy M. Plate, State of Florida, Professional Engineer, License No. 41153

This item has been digitally signed and sealed by Timothy M. Plate, P.E. on the date indicated here.

Printed copies of this document are not considered signed and sealed and the signature must be verified on any electronic copies.

TIMOTHY M. PLATE, P.E.
 DATE: _____
 LICENSE NO. 41153

C-305

R:\AVALON GROVES\VILLAGE 3\ENGINEERING\RECORD\PHASE 2\GD-REC-305-20210716 12:57 PM ALCIA SIKES

STRUCTURE TABLE			
STR. NO.	STR. TYPE	TOP ELEV.	COMMENTS
1	FDOT TYPE 3 CURB INLET	117.78 118.07	PHASE 2
2	FDOT TYPE 3 CURB INLET	117.75 118.02	PHASE 2
3	TYPE P MANHOLE 4'-0" DIA.	117.64 117.02	PHASE 2
4	TYPE P MANHOLE 4'-0" DIA.	117.44 116.93	PHASE 2
5	FDOT TYPE 4 CURB INLET	116.85 116.89	PHASE 2
6	FDOT TYPE 3 CURB INLET	116.85 117.10	PHASE 2
7	TYPE P MANHOLE 4'-0" DIA.	117.24 117.18	PHASE 2
8	FDOT TYPE 4 CURB INLET	116.85 116.95	PHASE 2
9	FDOT TYPE 3 CURB INLET	116.85 116.97	PHASE 2
10	TYPE J MANHOLE 6'-0" DIA.	117.52 117.43	PHASE 2
11	FDOT TYPE 4 CURB INLET	117.55 117.72	PHASE 2
12	TYPE J MANHOLE 6'-0" DIA.	118.05 117.91	PHASE 2
13	TYPE J MANHOLE 6'-0" DIA.	116.75 116.96	PHASE 2
14	MES 42" RCP		PHASE 2
15	FDOT TYPE 4 CURB INLET	116.55 116.93	PHASE 2
16	FDOT TYPE 4 CURB INLET	116.55 116.89	PHASE 2
17	FDOT TYPE 4 CURB INLET	117.83 118.15	PHASE 2
18	FDOT TYPE 3 CURB INLET	117.81 117.94	PHASE 2
19	TYPE J MANHOLE 5'-0" DIA.	117.50 117.64	PHASE 2
20	FDOT TYPE 3 CURB INLET	117.06 117.26	PHASE 2

PIPE TABLE							
START STR.	END STR.	PIPE DIMENSION & MATERIAL	LENGTH	SLOPE	START INV.	END INV.	FALL IN FEET
1	2	18" RCP	36	0.27% 0.28%	113.60 113.25	113.50 113.15	0.10
2	3	18" RCP	166	0.24% 0.27%	113.50 113.10	113.10 112.65	0.40
3	4	18" RCP	33	0.60% 0.30%	113.10 112.63	112.90 112.53	0.20
4	6	18" RCP	49	0.41% 0.48%	112.90 112.50	112.70 112.26	0.20
5	6	24" RCP	35	0.29% 0.71%	112.20 112.18	112.10 111.93	0.10
6	7	30" RCP	171	0.18% 0.60%	111.60 111.21	111.30 110.18	0.30
7	10	30" RCP	32	0.31% 0.28%	109.70 109.78	109.60 109.69	0.10
8	9	24" RCP	35	0.29% 0.14%	112.20 111.91	112.10 111.81	0.10
9	10	30" RCP	329	0.09% 0.14%	111.60 111.25	111.30 110.80	0.30
10	11	36" RCP	45	0.23% 0.32%	109.60 109.64	109.50 109.50	0.10
11	12	42" RCP	142	0.07% 0.08%	107.30 107.31	107.20 107.11	0.10
12	13	42" RCP	117	0.09% 0.09%	107.20 107.18	107.10 107.08	0.10
13	14	42" RCP	29	0.34% 0.26%	107.10 107.08	107.00 107.00	0.10
15	16	18" RCP	37	0.27% 0.22%	112.40 112.50	112.30 112.42	0.10
16	19	36" RCP	198	0.05% 0.05%	109.50 109.95	109.40 109.85	0.10
17	18	18" RCP	36	0.28% 0.25%	113.70 113.50	113.60 113.41	0.10
18	19	18" RCP	55	0.18% 0.17%	111.00 111.20	110.90 111.10	0.10
19	20	36" RCP	157	0.13% 0.42%	109.40 109.85	109.20 109.85	0.20
20	22	36" RCP	132	0.15% 0.15%	109.20 109.20	109.00 109.00	0.20
21	22	18" RCP	35	0.28% 0.23%	112.50 112.34	112.40 112.26	0.10

STRUCTURE TABLE			
STR. NO.	STR. TYPE	TOP ELEV.	COMMENTS
21	FDOT TYPE 4 CURB INLET	116.55 116.69	PHASE 2
22	FDOT TYPE 3 CURB INLET	116.55 116.72	PHASE 2
23	FDOT TYPE 3 CURB INLET	117.45 117.56	PHASE 2
24	FDOT TYPE 3 CURB INLET	117.39 117.51	PHASE 2
25	MES 42" RCP		PHASE 2
26	FDOT TYPE 3 CURB INLET	117.45 117.42	PHASE 2
27	FDOT TYPE 4 CURB INLET	117.45 117.46	PHASE 2
29	FDOT TYPE 4 CURB INLET	117.47 117.40	PHASE 2
30	FDOT TYPE 4 CURB INLET	116.55 116.68	PHASE 2
31	FDOT TYPE 3 CURB INLET	116.55 116.65	PHASE 2
32	FDOT TYPE 4 CURB INLET	116.55	PHASE 1
33	FDOT TYPE 4 CURB INLET	116.55	PHASE 1
34	MES 36" RCP		PHASE 1
35	FDOT TYPE 3 CURB INLET	117.19	PHASE 1
36	FDOT TYPE 3 CURB INLET	117.19	PHASE 1
37	FDOT TYPE 3 CURB INLET	117.16	PHASE 1
38	FDOT TYPE 3 CURB INLET	117.14	PHASE 1
39	FDOT TYPE 4 CURB INLET	116.55	PHASE 1
40	FDOT TYPE 4 CURB INLET	116.55	PHASE 1
41	MES 30" RCP		PHASE 1

PIPE TABLE							
START STR.	END STR.	PIPE DIMENSION & MATERIAL	LENGTH	SLOPE	START INV.	END INV.	FALL IN FEET
22	24	36" RCP	200	0.10%	109.00 109.00	108.80	0.20
23	24	18" RCP	39	0.25%	113.40 113.35	113.20 113.25	0.10
24	25	42" RCP	170	0.18% 0.39%	109.70 109.70	109.40 109.00	0.30
26	27	18" RCP	35	0.28% 0.57%	113.00 112.70	112.90 112.50	0.10
27	29	24" RCP	207	0.29% 0.30%	110.40 110.40	109.80 109.78	0.60
29	31	30" RCP	138	0.14% 0.21%	109.80 109.74	109.60 109.45	0.20
30	31	18" RCP	35	0.29% 0.35%	112.50 112.02	112.40 111.90	0.10
31	32	36" RCP	279	0.11%	109.10	108.80	0.30
32	33	36" RCP	35	0.28%	108.80	108.70	0.10
33	34	36" RCP	167	0.12%	108.20	108.00	0.20
35	36	18" RCP	35	0.29%	113.00	112.90	0.10
36	39	18" RCP	173	0.52%	112.90	112.00	0.90
37	38	18" RCP	35	0.28%	113.00	112.90	0.10
38	39	24" RCP	173	0.52%	112.40	111.50	0.90
39	40	24" RCP	36	0.28%	111.50	111.40	0.10
40	41	30" RCP	168	0.12%	108.80	108.60	0.20
42	43	18" RCP	35	0.29%	111.50	111.40	0.10
43	44	24" RCP	168	0.12%	110.90	110.70	0.20
44	45	30" RCP	112	0.18%	110.20	110.00	0.20
45	46	30" RCP	306	0.07%	109.20	109.00	0.20

RECORD DATA PROVIDED BY BLUE OX LAND SERVICES

SERENOA VILLAGE 3 PHASE 2 "RECORD DRAWINGS"

FACILITIES SHOWN HEREON HAVE BEEN, TO THE BEST OF MY KNOWLEDGE, CONSTRUCTED IN SUBSTANTIAL ACCORDANCE WITH APPROVED PLANS, SPECIFICATIONS AND MODIFICATIONS FOR THIS PROJECT. VERIFICATION IS BASED ON PERIODIC CONSTRUCTION OBSERVATION AND SURVEY NOTATIONS SHOWN ON PLANS. SURVEYED DIMENSIONS AND ELEVATIONS SHOWN AS RECORD INFORMATION HAVE BEEN FIELD VERIFIED.

LAST DATE OF FIELD SURVEY: 07/26/2021

RECORD DRAWING LEGEND

~~42.00~~
42.07

PROPOSED/DESIGN ELEVATION OR DIMENSION LINED THROUGH, "RECORD" ELEVATION OR DIMENSION WRITTEN IN.

INDICATES RECORD ELEVATION

INDICATES "RECORD" ELEVATION, DIMENSION, SLOPE, et cetera.

INDICATES "RECORD" ITEM NUMBER

INDICATES "RECORD" ITEM DESCRIPTION

STRUCTURE TABLE			
STR. NO.	STR. TYPE	TOP ELEV.	COMMENTS
49	FDOT TYPE 3 CURB INLET	118.35	PHASE 1
50	TYPE P MANHOLE 4'-0" DIA.	118.04	PHASE 1
51	MES 18" RCP		PHASE 1
52	FDOT TYPE 3 CURB INLET	119.17	PHASE 1
53	FDOT TYPE 3 CURB INLET	119.23	PHASE 1
54	TYPE P MANHOLE 3'-6" DIA.	118.94	PHASE 1
55	MES 18" RCP		PHASE 1
56	FDOT TYPE 4 CURB INLET	117.05	PHASE 1
57	FDOT TYPE 4 CURB INLET	117.05	PHASE 1
58	TYPE P MANHOLE 4'-0" DIA.	116.23	PHASE 1
59	MES 18" RCP		PHASE 1
60	FDOT TYPE 3 CURB INLET	118.29	PHASE 1

PIPE TABLE							
START STR.	END STR.	PIPE DIMENSION & MATERIAL	LENGTH	SLOPE	START INV.	END INV.	FALL IN FEET
46	47-A	36" RCP	142	0.14%	107.70	107.50	0.20
47-A	47	36" RCP	31	0.32%	107.50	107.40	0.10
48	49	18" RCP	35	0.28%	114.20	114.10	0.10
49	50	18" RCP	145	0.21%	111.30	111.00	0.30
50	51	18" RCP	64	0.16%	110.00	109.90	0.10
52	53	18" RCP	37	0.27%	115.00	114.90	0.10
53	54	18" RCP	144	0.21%	112.00	111.70	0.30
54	55	18" RCP	35	0.28%	110.00	109.90	0.10
56	57	18" RCP	35	0.29%	112.70	112.60	0.10
57	58	18" RCP	73	0.27%	110.00	109.80	0.20
58	59	18" RCP	26	0.39%	109.80	109.70	0.10
60	61	18" RCP	35	0.29%	114.10	114.00	0.10
61	62	18" RCP	189	0.16%	114.00	113.70	0.30
62	64	24" RCP	142	0.71%	113.20	112.20	1.00
63	64	18" RCP	36	0.27%	112.80	112.70	0.10
64	66	30" RCP	208	0.34%	111.70	111.00	0.70
65	66	18" RCP	36	0.28%	112.10	112.00	0.10
66	67A	36" RCP	360	0.31%	110.50	109.40	1.10
67	67A	18" RCP	44	0.23%	112.90	112.80	0.10
67A	68	36" RCP	183	0.10%	109.28	109.10	0.18


STRUCTURE TABLE			
STR. NO.	STR. TYPE	TOP ELEV.	COMMENTS
61	FDOT TYPE 3 CURB INLET	118.29	PHASE 1
62	TYPE P MANHOLE 3'-6" DIA.	117.58	PHASE 1
63	FDOT TYPE 3 CURB INLET	117.21	PHASE 1
64	FDOT TYPE 3 CURB INLET	117.25	PHASE 1
65	FDOT TYPE 4 CURB INLET	116.55	PHASE 1
66	FDOT TYPE 4 CURB INLET	116.55	PHASE 1
67	FDOT TYPE 3 CURB INLET	117.65	PHASE 1
67A	FDOT TYPE 3 CURB INLET	117.74	PHASE 1
68	TYPE J MANHOLE 5'-0" DIA.	118.43	PHASE 1
69	MES 42" RCP		PHASE 1
70	MES 36" RCP		PHASE 1
71	MES 36" RCP		PHASE 2
72	MES 36" RCP		PHASE 1
73	FES 30" RCP		PHASE 1
74	MES 24" RCP		PHASE 1
75	MES 36" RCP		PHASE 1
CS-100	TYPE E CONTROL STRUCTURE	116.30	PHASE 2
CS-110	TYPE D CONTROL STRUCTURE	116.50	PHASE 2
CS-120	TYPE D CONTROL STRUCTURE	116.20	PHASE 1
CS-130	TYPE D CONTROL STRUCTURE	114.80	PHASE 1

STRUCTURE TABLE			
STR. NO.	STR. TYPE	TOP ELEV.	COMMENTS
CS-140	TYPE C CONTROL STRUCTURE	116.00	PHASE 1
CS-150	TYPE E CONTROL STRUCTURE	114.33	PHASE 1

PIPE TABLE							
START STR.	END STR.	PIPE DIMENSION & MATERIAL	LENGTH	SLOPE	START INV.	END INV.	FALL IN FEET
68	69	42" RCP	167	0.06%	108.10	108.00	0.10
CS-100	70	36" RCP	37	0.27%	111.00	110.90	0.10
CS-110	71	36" RCP	35	0.28%	111.60	111.50	0.10
CS-120	72	36" RCP	48	0.21%	108.30	108.20	0.10
CS-130	73	30" RCP	50	0.20%	108.00	107.90	0.10
CS-140	74	24" RCP	46	0.22%	109.10	109.00	0.10
CS-150	75	36" RCP	35	0.29%	110.50	110.40	0.10

NOTE:

- ALL INLET AND MANHOLE STRUCTURE BOTTOMS ARE SPECIFIED TYPE 'P' UNLESS OTHERWISE NOTED. REFER TO FDOT DESIGN STANDARD INDEX 425-010.
- ALL FLARED END SECTIONS (FES) ARE SPECIFIED FDOT STANDARD INDEX 430-020 UNLESS OTHERWISE NOTED.
- ALL MITERED END SECTIONS (MES) ARE SPECIFIED FDOT STANDARD INDEX 430-021 UNLESS OTHERWISE NOTED.



HEIDT DESIGN
Civil Engineering • Planning & GIS
Transportation Engineering
Ecological Services • Landscape Architecture

5904-A Hampton Oaks Pkwy
Tampa, Florida 33610
Office: 813-253-5311
Fax: 813-464-7629
www.HeidtDesign.com

SERENOA VILLAGE 3 - PHASE 1, 2 & 3

STORM STRUCTURE DATA

PREPARED FOR: **VK AVALON GROVES, LLC**

02/07/2021	ADDED PH2 RECORD INFORMATION	DATE	DESCRIPTION
05/24/2021	REVISED MULTIPLE PIPE INVERTS	DATE	DESCRIPTION
07/26/2021	REVISED MULTIPLE PIPE INVERTS	DATE	DESCRIPTION
11/23/2021	REV. STRUCTURE NUMBERS	DATE	DESCRIPTION
11/28/2021	REVIEW SUBMITTAL	DATE	DESCRIPTION

PROJECT NO: KLP-AG-1089
 FILE: ST-REC
 DESIGN BY: FRANCIS
 DRAWN BY: JLOAIZA

STATE OF FLORIDA
PROFESSIONAL ENGINEER

Timothy M. Plate, P.E. (State of Florida, Professional Engineer, License No. 41153)
 This item has been digitally signed and sealed by Timothy M. Plate, P.E. on the date indicated here:
 Printed copies of this document are not considered signed and sealed and the signature must be verified on any electronic copies.

TIMOTHY M. PLATE, P.E.
 DATE: _____
 LICENSE NO. 41153

C-313

R:\AVALON GROVES\VILLAGE 3\ENGINEERING\RECORD\PHASE 2\ST-REC.DWG-C-313 20220216 10:57 AM ALICIA SHIRES